

# **PUBLIC ELECTRICITY, DRINKING WATER and SEWAGE**

**Part of the “Public Services” Section of the Citizen Report Card  
on Public Services, Good Governance and Development from 120 Niger Delta Communities**

**(6 States, 13 LGAs, 478 Focus Groups, 9,018 Participants)**

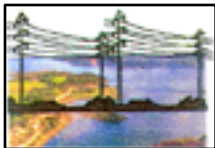
Niger Delta Professionals for Development (NIDPRODEV)  
Effurun-Warri, Delta State, Nigeria  
January 2011

Sponsored by the European Union

This project was funded by the **European Union (EU)**. Based on a partnership agreement between the **EU** and the **Federal Republic of Nigeria**, the implementation responsibilities of the **EU INSIDE** programme belong to the **National Planning Commission (NPC)**.



**Niger Delta Professionals for Development (NIDPRODEV)** is a Nigerian non-governmental organization that has worked in the Niger Delta for over 11 years on conflict management, community development, good governance, livelihood issues, and data collection and analysis. The **Leadership Center for Peace, Integrity and Transformation** is NIDPRODEV's parent organization.



**NIDPRODEV**

PTI Road, Plot 211, Fashion-N-Vogue Building  
Effurun-Warri, Delta State  
234 802-327-0549, 234 805-851-1591

## METHODOLOGY

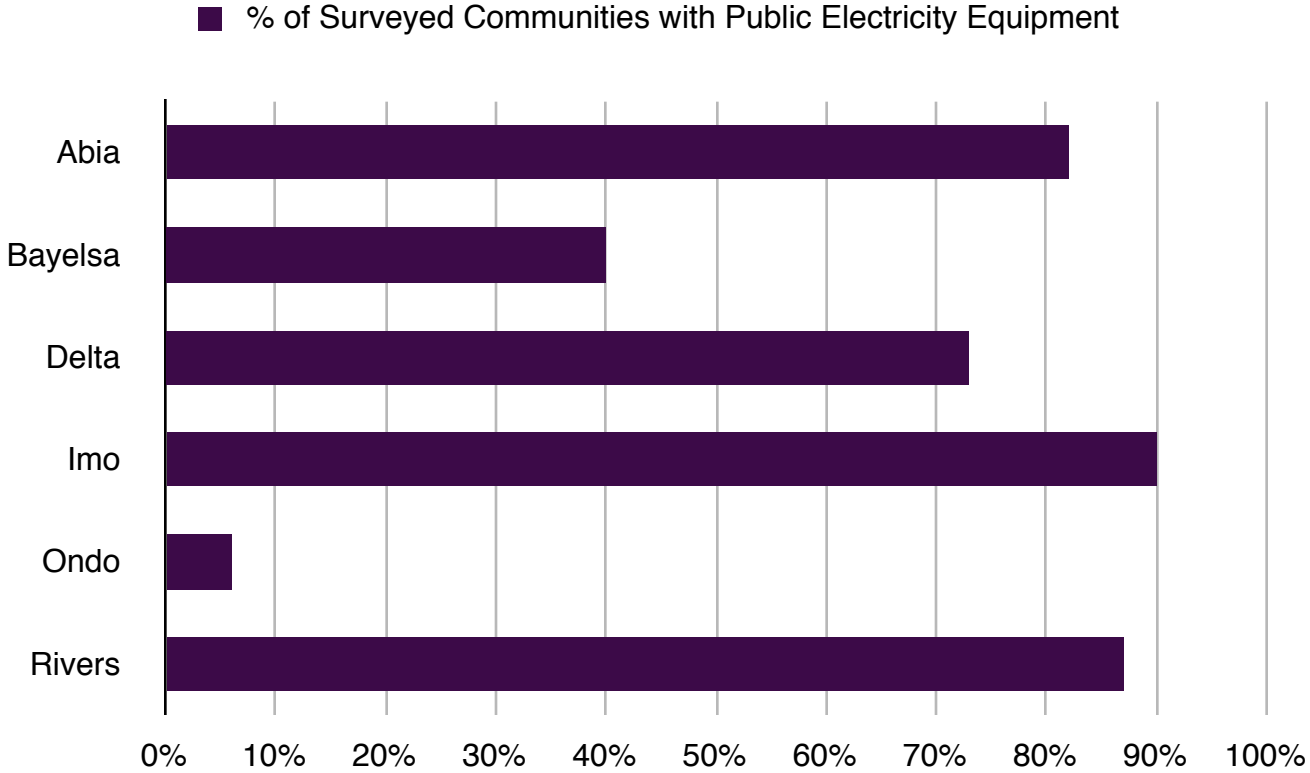
NIDPRODEV programme officers fluent in local languages and culture visited each of the 120 communities, where they first spoke to community members in a Town Hall Meeting to describe the project and answer any questions. Community members were then asked to participate in Focus Group discussions. Those who participated were divided into four (4) different focus groups based on gender and age: Older Men, Younger Men, Older Women, and Younger Women. The age of forty years (40) was given as the distinguishing age between an older person and a younger person. Although NIDPRODEV staff did not verify participants' ages, it did ensure that people who presented themselves in focus groups who were noticeably above or below the appropriate age for that group were asked to join the appropriate Focus Group.

1. Within each Focus Group, participants were asked each survey question and then instructed to discuss the question openly among the group members. When the group reached consensus on an answer, the NIDPRODEV programme officer repeated the answer and asked the group to confirm that the answer given is indeed the one they wished to have recorded.
2. Answers from a community's four (4) focus groups were triangulated to arrive at the responses identified within this section of the Citizen Report Card.
3. NIDPRODEV did not validate or interpret the answers given by community members; it simply recorded them.

## TABLE OF CONTENTS

	<u>Page</u>
1. State-to-State Comparison of Communities with Public Electricity Equipment in Place .....	5
2. State-to-State Comparison of Hourly Average of Public Electric Current or “Light” per Day .....	6
3. Perceptions of Quality of Community Drinking Water .....	7
4. Sewage (Human Waste) Problems During Rainy Season .....	8-9
5. Community-Level Detailed Information by State:	
a. Abia State .....	11
b. Bayelsa State .....	15
c. Delta State .....	19
d. Imo State .....	25
e. Ondo State .....	29
f. Rivers State .....	33

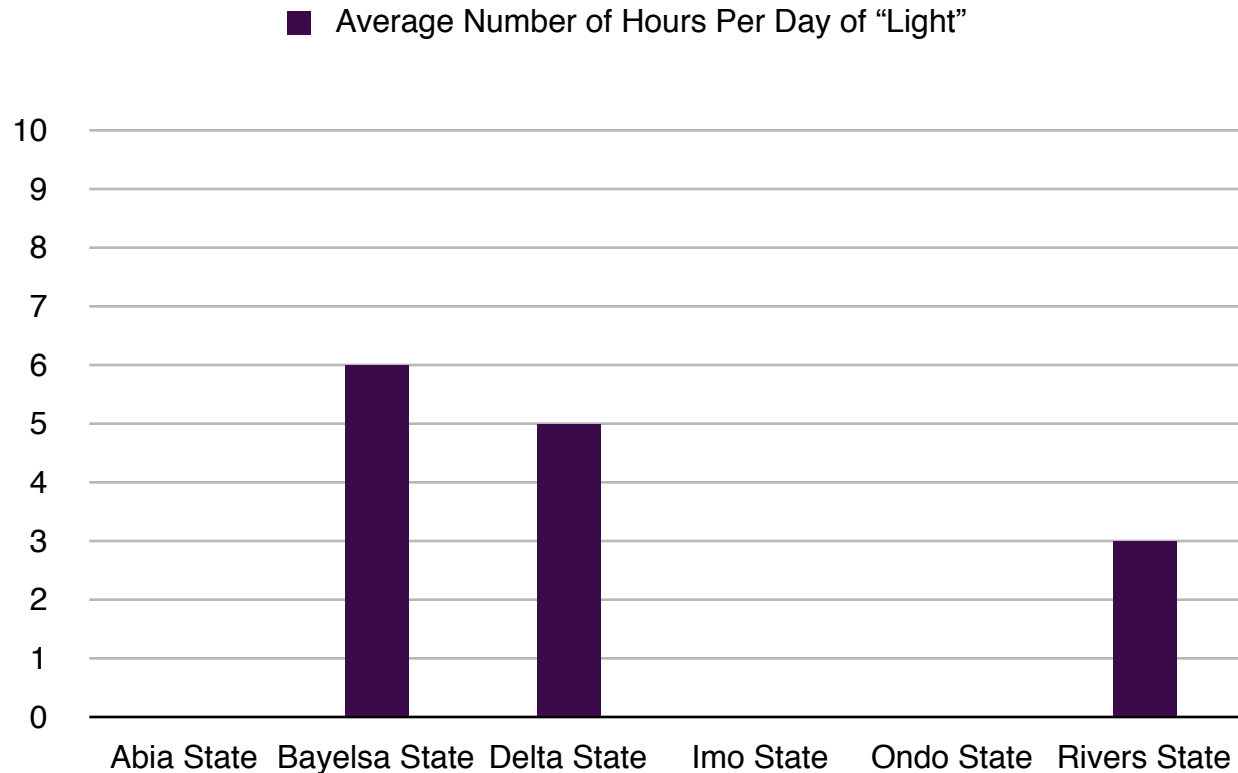
# **PUBLIC ELECTRICITY EQUIPMENT IN PLACE\***



\* Public Electricity Equipment refers to electric poles, wires, and transformers.

NOTE: All of the public electricity equipment in Bayelsa State is in Kolokuma/Opokuma LGA; Sagbama LGA has no public electricity equipment installed.

## **HOURS PER DAY IN WHICH A COMMUNITY WITH EQUIPMENT HAS “LIGHT” OR ELECTRIC CURRENT**

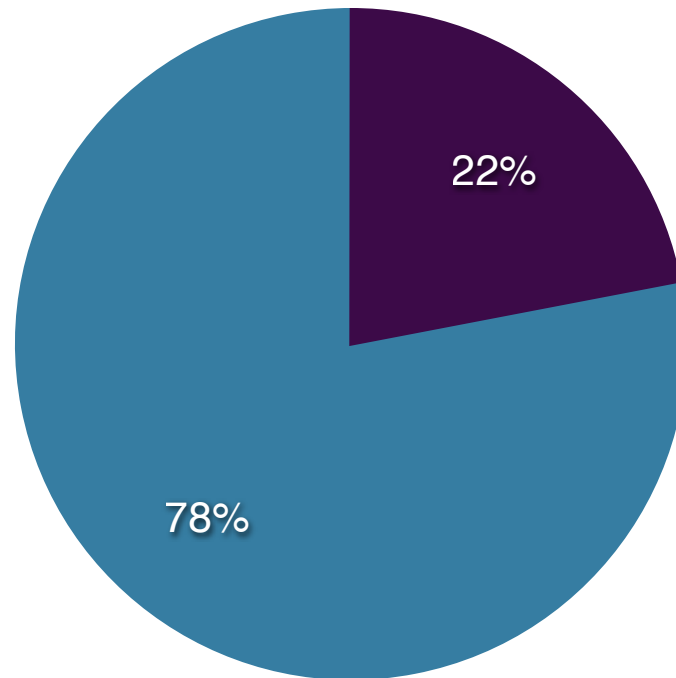


### **NOTE:**

1. Those communities with public electricity equipment in Abia, Imo, and Ondo State experienced less than one hour of public current or “light” per day. In the majority of communities, there was no light at all or so irregular that it was negligible. See details in the tables presented in the State sections of this document.
2. All of the public electricity provided in Bayelsa State was in Kolokuma/Opokuma LGA only.
3. The average number of 5 hours of light per day in Delta State is skewed by one community’s availability of public light 24 hours per day. When this community is not included, the average number of hours of light per day is 4 hours.

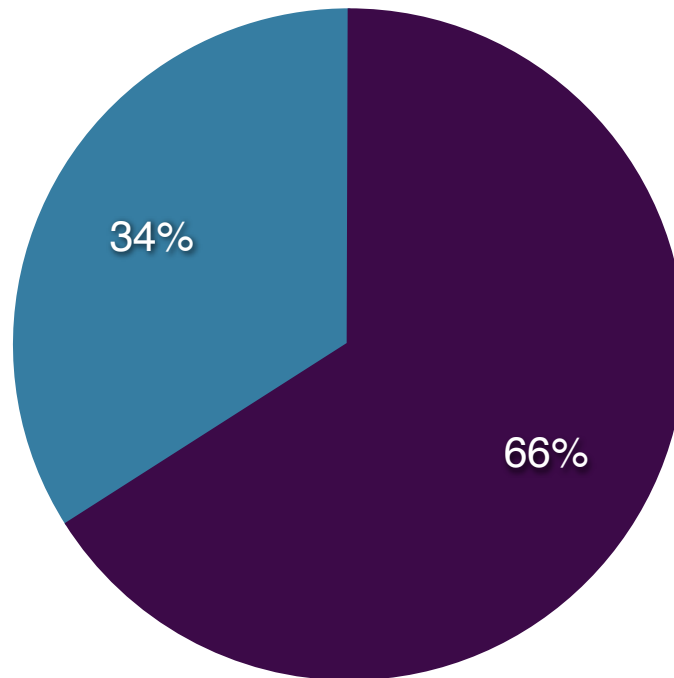
## COMMUNITY PERCEPTIONS OF “SAFE” DRINKING WATER

● Drinking Water is Safe      ● Drinking Water is Not Safe



### Sewage (Human Waste) During Rainy Season

- Human Waste Floats Back into Community During Rainy Season
- No Problem with Human Waste During Rainy Season

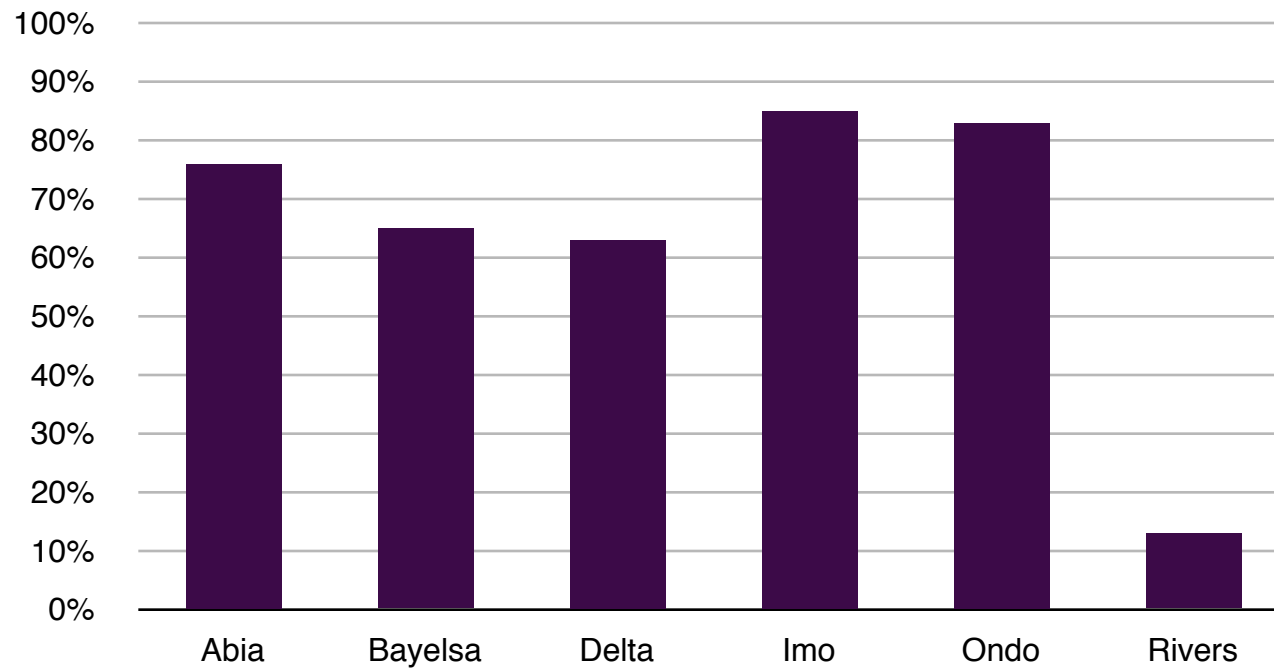




## PERCENTAGE OF SURVEYED COMMUNITIES THAT EXPERIENCE HUMAN WASTE FLOATING BACK INTO COMMUNITIES DURING THE RAINY SEASON

### A State-to-State Comparison

■ % of Surveyed Communities



PUBLIC ELECTRICITY, DRINKING WATER, AND SEWAGE  
BY STATE

# **ABIA STATE**

Ukwa East LGA (9 Communities)

and

Ukwa West LGA (8 Communities)

STATE	LGA	COMMUNITY	Does your community have public electricity thru electric company?	For how many hours per day does the community have public electricity through electric company?	Do you think that the water in your community is safe to drink?	Does human waste float into your community during the rainy season?
Abia	Ukwa East	Akirika Nta	yes	no light	yes	no
		Obuozu (Ikwoorieator West)	yes	once in 2 weeks	yes	yes
		Azumini	yes	no light	no	yes
		Obeaku	no	n/a	no	yes
		Ohambele	yes	no light	yes	yes
		Obohia	yes	no light	no	yes
		Okotoko	yes	no light	yes	no

STATE	LGA	COMMUNITY	Does your community have public electricity thru electric company?	For how many hours per day does the community have public electricity through electric company?	Do you think that the water in your community is safe to drink?	Does human waste float into your community during the rainy season?
		Akwete	yes	not regular	no	yes
		Ohuru Ndoki	no	n/a	yes	yes
<b>Abia</b>	<b>Ukwa West</b>	Owaza	no	n/a	no	no
		Umudiobia	yes	no light	no	yes
		Obehie	yes	no light	no	yes
		Umuorie	yes	once in a year	yes	yes
		Umuokwor Asa	yes	no light	no	yes

STATE	LGA	COMMUNITY	Does your community have public electricity thru electric company?	For how many hours per day does the community have public electricity through electric company?	Do you think that the water in your community is safe to drink?	Does human waste float into your community during the rainy season?
		Ezendioma	yes	once per month	no	yes
		Umuebulungwu	yes	no steady light	no	no
		Umuiku	yes	once in a month	yes	yes

# **BAYELSA STATE**

Kolokuma/Opokuma LGA (10 Communities)

and

Sagbama LGA (10 Communities)

STATE	LGA	COMMUNITY	Does your community have public electricity thru electric company?	For how many hours per day does the community have public electricity through electric company?	Do you think that the community's water is safe to drink?	Does human waste float into your community during the rainy season?
Bayelsa	Kolokuma/Opokuma	Igbedi	no	n/a	no	no
		Okoloba	yes	6	no	yes
		Sabagreia	yes	2	no	no
		Kaiama	yes	12	no	yes
		Ayibabiri	yes	2	no	yes
		Orubiri	yes	12	no	yes
		Ayakoroama	yes	14	no	yes
		Akaranbiri	yes	2 hours per week	no	yes



STATE	LGA	COMMUNITY	Does your community have public electricity thru electric company?	For how many hours per day does the community have public electricity through electric company?	Do you think that the community's water is safe to drink?	Does human waste float into your community during the rainy season?
		Odi	no	n/a	no	no
		Olobiri	yes	one day per week	no	yes
<b>Bayelsa</b>	<b>Sagbama</b>	Toru-Ebeni	no	n/a	no	yes
		Trofani	no	n/a	no	yes
		Odoni	no	n/a	yes	no
		Agbere	no	n/a	no	yes
		Adagbabiri	no	n/a	no	yes

STATE	LGA	COMMUNITY	Does your community have public electricity thru electric company?	For how many hours per day does the community have public electricity through electric company?	Do you think that the community's water is safe to drink?	Does human waste float into your community during the rainy season?
		Sagbama	no	n/a	no	no
		Bulou-Orua	no	n/a	no	no
		Ebedebiri	no	n/a	no	yes
		Tungbo-Ebe	no	n/a	no	yes
		Toru-Angiama	no	n/a	no	no

# **DELTA STATE**

Ughelli South LGA (10 Communities),

Uvwie LGA (10 Communities)

and

Warri South LGA (10 Communities)

STATE	LGA	COMMUNITY	Does your community have public electricity thru electric company?	For how many hours per day does the community have public electricity through electric company?	Do you think that the community's water is safe to drink?	Does human waste float into your community during the rainy season?
Delta	Ughelli South	Ekakpamre	yes	24	yes	no
		Otu- Jeremi	yes	3	no	yes
		Iwhrekan	yes	3	no	yes
		Okpavuerhe	yes	30 minutes	no	yes
		Olodiana	yes	4	no	no
		Arhagba	yes	5	no	no
		Usiefrun	yes	8	no	yes

STATE	LGA	COMMUNITY	Does your community have public electricity thru electric company?	For how many hours per day does the community have public electricity through electric company?	Do you think that the community's water is safe to drink?	Does human waste float into your community during the rainy season?
		Ewu	yes	4	no	yes
		Oginibo	yes	3	no	yes
		Okwagbe Waterside	yes	15 minutes	no	yes
<b>Delta</b>	<b>Uvwie</b>	Jakpa	yes	0	no	yes
		Ugbomro	yes	5	no	yes
		Ugbolokposo	yes	5	yes	yes
		Ohorhe 1	yes	5	no	no

STATE	LGA	COMMUNITY	Does your community have public electricity thru electric company?	For how many hours per day does the community have public electricity through electric company?	Do you think that the community's water is safe to drink?	Does human waste float into your community during the rainy season?
		Ugborikoko	yes	0	yes	yes
		Erovie	no	n/a	no	no
		Ugboroke	yes	3	yes	yes
		Ebrumede	yes	7	no	yes
		Alaka	yes	1	yes	yes
		Urhumarho/Okotogbo	yes	1	no	no
<b>Delta</b>	<b>Warri South</b>	Aja-Etan	yes	5	yes	yes

STATE	LGA	COMMUNITY	Does your community have public electricity thru electric company?	For how many hours per day does the community have public electricity through electric company?	Do you think that the community's water is safe to drink?	Does human waste float into your community during the rainy season?
		Ijala	yes	7	yes	no
		Usele	no	n/a	no	yes
		Ekurede Itsekiri	no	n/a	no	yes
		Ugbori	yes	6	no	no
		Ajigba	no	n/a	no	no
		Ugbuwangue	no	n/a	no	yes
		Obodo	no	n/a	no	no
		Orugbo	no	n/a	no	no

STATE	LGA	COMMUNITY	Does your community have public electricity thru electric company?	For how many hours per day does the community have public electricity through electric company?	Do you think that the community's water is safe to drink?	Does human waste float into your community during the rainy season?
		Omadino	no	n/a	no	yes



# **IMO STATE**

Oguta LGA (10 Communities)

and

Ohaji Egbema LGA (10 Communities)

STATE	LGA	COMMUNITY	Does your community have public electricity thru electric company?	For how many hours per day does the community have public electricity through electric company?	Do you think that the community's water is safe to drink?	Does human waste float into your community during the rainy season?
Imo	Oguta	Ndi-Uloukwu Izombe	yes	over 4 years and no light	no	yes
		Mgbele	yes	24 hours in a month	yes	no
		Ndionyemaobi	yes	24 hours in 6 months	no	yes
		Egwe	yes	1 hour every 3 weeks	yes	no
		Ejemekwuru	yes	one hour per month	no	yes
		Umunwama-Izombe	yes	no light for over 3 years	yes	yes
		Eziorsu	yes	24 hours in one month	no	yes

STATE	LGA	COMMUNITY	Does your community have public electricity thru electric company?	For how many hours per day does the community have public electricity through electric company?	Do you think that the community's water is safe to drink?	Does human waste float into your community during the rainy season?
		Aborshi-Izombe	yes	30 minutes a year	no	yes
		Egbuoma	yes	24 hours in six months	yes	yes
		Obudi Agwa	no	n/a	yes	yes
<b>Imo</b>	<b>Ohaji-Egbema</b>	Umuapu	yes	10 minutes per month	no	yes
		Obitti	no	no light	yes	yes
		Umuagwo	yes	2 hours in a month	yes	yes
		Etekwuru	yes	no source of power	no	yes

STATE	LGA	COMMUNITY	Does your community have public electricity thru electric company?	For how many hours per day does the community have public electricity through electric company?	Do you think that the community's water is safe to drink?	Does human waste float into your community during the rainy season?
		Ihie	yes	2 hours in 6 months	no	yes
		Obosima	yes	not functional	yes	yes
		Mmahu	yes	24 hours in 6 months	no	yes
		Opuoma	yes	very irregular	yes	yes
		Obiakpu	yes	24 hours per year	no	yes
		Obokofia	yes	1 hour per month	yes	no

# **ONDO STATE**

Ese Odo LGA (9 Communities)

and

Ilaje LGA (9 Communities)

STATE	LGA	COMMUNITY	Does your community have public electricity thru electric company?	For how many hours per day does the community have public electricity through electric company?	Do you think that the community's water is safe to drink?	Does human waste float into your community during the rainy season?
Ondo	Ese Odo	Osari	no	n/a	no	yes
		Isreal Kiri	no	n/a	no	yes
		Biagbini	no	n/a	no	yes
		Opuba	no	n/a	no	yes
		Ukpe	no	n/a	no	yes
		Arogbo	no	n/a	no	yes
		Akpata	no	n/a	no	yes

STATE	LGA	COMMUNITY	Does your community have public electricity thru electric company?	For how many hours per day does the community have public electricity through electric company?	Do you think that the community's water is safe to drink?	Does human waste float into your community during the rainy season?
		Igbotu	yes	30 minutes every 2 to 3 weeks	yes	no
		Kiribo	no	n/a	no	no
<b>Ondo</b>	<b>Ilaje</b>	Anehin	no	n/a	no	yes
		Aiyetoro	no	n/a	no	yes
		Ode-Mahin	no	n/a	no	yes
		Mese	no	n/a	no	yes
		Ilowo	no	n/a	no	yes

STATE	LGA	COMMUNITY	Does your community have public electricity thru electric company?	For how many hours per day does the community have public electricity through electric company?	Do you think that the community's water is safe to drink?	Does human waste float into your community during the rainy season?
		Ojumole	no	n/a	no	yes
		Gbagira	no	n/a	no	yes
		Rewoye	no	n/a	no	no
		Awoye	no	n/a	no	yes



# **RIVERS STATE**

Ahoada East LGA (9 Communities)

and

Obio-Akpor LGA (6 Communities)

STATE	LGA	COMMUNITY	Does your community have public electricity thru electric company?	For how many hours per day does the community have public electricity through electric company?	Do you think that the community's water is safe to drink?	Does human waste float into your community during the rainy season?
Rivers	Ahoada East	Ihuowo	no	no	no	no
		Ikata	no	no	no	no
		Okporowo	yes	5	no	yes
		Odiabidi	yes	2	no	no
		Ula-Ehuda	yes	3	no	no
		Ihuaje	yes	30 minutes per day	no	no
		Udebu	yes	5	no	no

STATE	LGA	COMMUNITY	Does your community have public electricity thru electric company?	For how many hours per day does the community have public electricity through electric company?	Do you think that the community's water is safe to drink?	Does human waste float into your community during the rainy season?
		Ogbo	yes	1	no	no
		Edeoha	yes	6	no	no
<b>Rivers</b>	<b>Obio-Akpor</b>	Elikpokwuodu	yes	3	no	no
		Rumuodomaya	yes	2	no	no
		Orokwuruola-Nu-Orofu	yes	10	no	no
		Choba	yes	30 minutes per day	no	no
		Woji	yes	1 hour 30 minutes per day	no	yes

STATE	LGA	COMMUNITY	Does your community have public electricity thru electric company?	For how many hours per day does the community have public electricity through electric company?	Do you think that the community's water is safe to drink?	Does human waste float into your community during the rainy season?
		Eliozu	yes	5 minutes per day	no	no

