

EDUCATION

**Part of the “Public Services” Section of the Citizen Report Card
on Public Services, Good Governance and Development from 120 Niger Delta Communities**

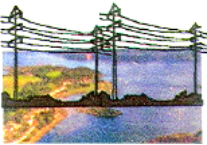
Niger Delta Professionals for Development (NIDPRODEV)
Effurun-Warri, Delta State, Nigeria
January 2011

Sponsored by the European Union

This project was funded by the **European Union (EU)**. Based on a partnership agreement between the **EU** and the **Federal Republic of Nigeria**, the implementation responsibilities of the **EU INSIDE** programme belong to the **National Planning Commission (NPC)**.



Niger Delta Professionals for Development (NIDPRODEV) is a Nigerian non-governmental organization that has worked in the Niger Delta for over 11 years on conflict management, community development, good governance, livelihood issues, and data collection and analysis. The **Leadership Center for Peace, Integrity and Transformation** is NIDPRODEV's parent organization.



NIDPRODEV

PTI Road, Plot 211, Fashion-N-Vogue Building
Effurun-Warri, Delta State
234 802-327-0549, 234 805-851-1591

METHODOLOGY

1. Between August and December 2010, NIDPRODEV programme officers fluent in local languages and culture visited each of the 120 communities, where they first spoke to community members in a Town Hall Meeting to describe the project and answer any questions. Community members were then asked to participate in Focus Group discussions. Those who participated were divided into four (4) different focus groups based on gender and age: Older Men, Younger Men, Older Women, and Younger Women. The age of forty years (40) was given as the distinguishing age between an older person and a younger person. Although NIDPRODEV staff did not verify participants' ages, it did ensure that people who presented themselves in focus groups who were noticeably above or below the appropriate age for that group were asked to join the appropriate Focus Group.
2. Within each Focus Group, participants were given each survey question and then instructed to discuss the question openly among the group members. When the group reached consensus on an answer, the NIDPRODEV programme officer repeated the answer and asked the group to confirm that the answer given is indeed the one they wished to have recorded. For certain questions that required individual participant answers, such as "Who in this room can read a book out loud to another person," participants were asked to raise their hands as the form of response.
3. In addition to specific answers to survey questions, qualitative responses from each Focus Group were recorded by the NIDPRODEV programme officers. Those narrative answers are provided in whole in the section of the Citizen Report Card of 120 Niger Delta Communities as "Community Member Comments." The comments reinforce the answers given in the survey responses, and in some cases, go further in providing a more contextual understanding of community life and struggles.
4. In questions relating to teachers, the responses of Younger Women were given more weight than the responses of other Focus Groups given that Younger Women have a more intimate understanding of the educational environment of their children. Questions relating to number of boys and girls enrolled in Primary School and the salary of teachers were asked to school administrators, not community members. In some cases, in which school was out of session during the visit by NIDPRODEV programme officers, the responses identified in our survey were left as "no response."

TABLE OF CONTENTS

	<u>Page</u>
1. Summary of Those Who Can Read a Book Out Loud to Another (by State and LGA)	5
2. Summary of Communities That Have a Government-Run Primary School	7
3. Percentage of Communities with Primary Schools that Have Libraries	9
4. Percentage of Communities with Primary Schools that have Toilets	10
5. Percentage of Communities with Primary Schools that have a Desk and Chair for Each Child	11
6. Percentage of Communities in Which Parents Pay for Primary School Textbooks	12
7. Summary of Community Members' Opinions About Teacher Quality	13
8. Detailed Community Member Responses by State, LGA and Communities:	
a. Abia State	18
b. Bayelsa State	28
c. Delta State	38
d. Imo State	53
e. Ondo State	63
f. Rivers State	73

1. FOCUS GROUP QUESTION: How many of you can read a book out loud to another person?

FOCUS GROUP	Imo State LGAs (Ohaji Egbema and Oguta)	Abia State LGAs (Ukwa East and Ukwa West)	Ondo State LGAs (Ilaje and Ese Odo)	Bayelsa State LGAs (Kolokuma/Opokuma and Sagbama)	Delta State LGAs (Ughelli South, Uvwie, and Warri South)	Rivers State LGAs (Obio-Akpor and Ahoada East)
Older Men	70%, 64%	86%, 71%	38%, 47%	82%, 68%	62%, 34%, 82%	51%, 68%
Younger Men	72%, 29%	67%, 68%	53%, 57%	78%, 64%	69%, 49%, 84%	52%, 64%
Younger Women	58%, 77%	77%, 74%	48%, 54%	65%, 40%	77%, 24%, 71%	82%, 40%
Older Women	31%, 8%	50%, 35%	20%, 19%	25%, 22%	27%, 9%, 43%	39%, 22%

**MANY YOUNGER MEN CANNOT READ AS WELL AS
THE OLDER GENERATION OF MEN IN THEIR COMMUNITY***

In 44 communities or 37% of the 120 communities surveyed,
the ability of younger men to read well
appears to have fallen
below the ability of older men.

In 13 communities or 11% of the 120 communities surveyed,
the ability of younger women to read well
appears to have fallen below the ability of older women.

* See each State for identification of communities in which the reading ability of younger men and younger women appears to have fallen below the reading ability of the older generation.

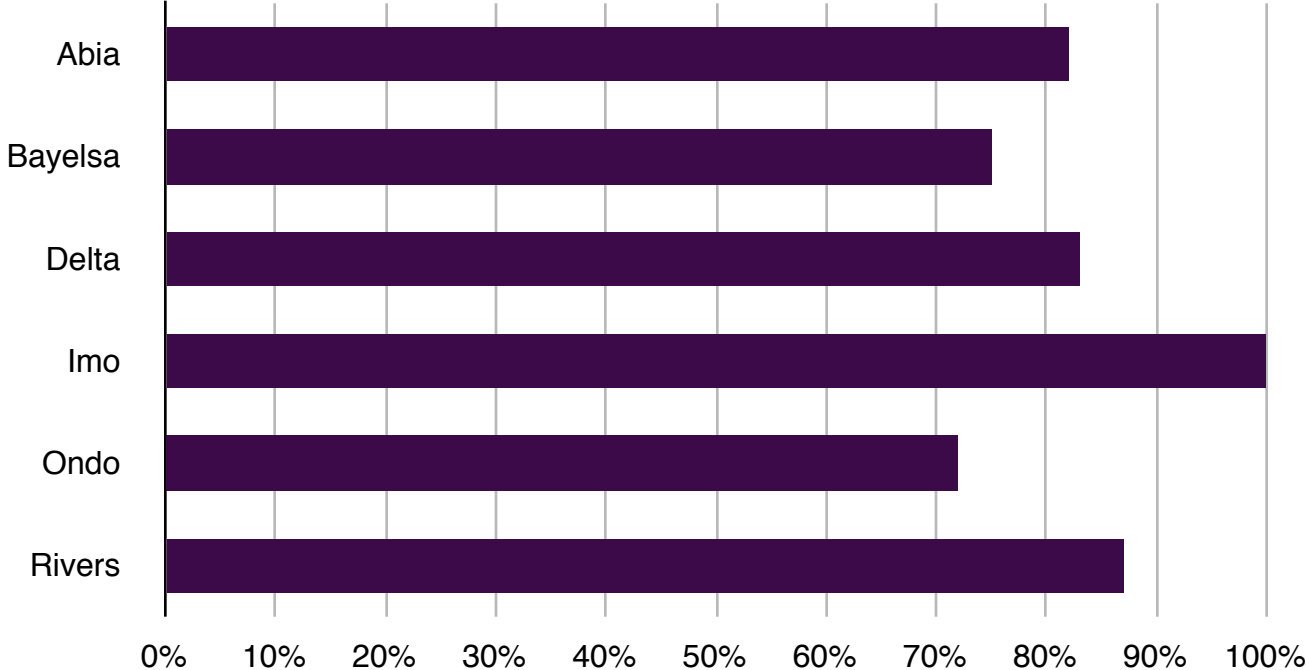
2. FOCUS GROUP QUESTION: Does your community have a primary school [in use]?

LGA Name	IMO STATE		ABIA STATE		ONDO STATE		BAYELSA STATE		DELTA STATE		RIVERS STATE	
	yes	no	yes	no	yes	no	yes	no	yes	no	yes	no
Ohaji Egbema	10	0										
Oguta	10	0										
Ukwa East			8	1								
Ukwa West			6	2								
Ilaje					6	3						
Ese Odo					7	2						
Kolokuma/ Opokuma							5	5				
Sagbama							10	0				
Ughelli South									10	0		
Uvwie									9	1		
Warri South									6	4		
Obio-Akpor											4	2
Ahoada East											9	0
TOTAL	20	0	14	3	13	5	15	5	25	5	13	2

PERCENTAGE OF COMMUNITIES SURVEYED THAT HAVE A GOVERNMENT-RUN PRIMARY SCHOOL

A State-to-State Comparison

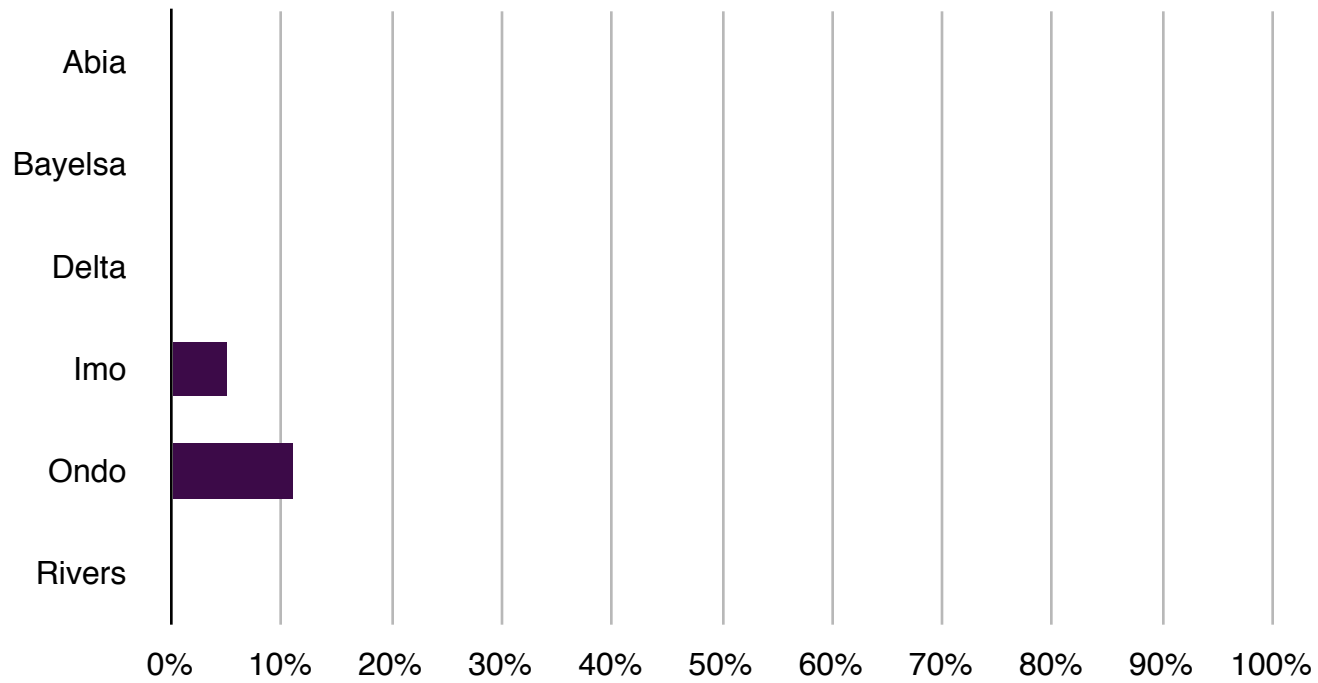
■ % of Communities Surveyed



PERCENTAGE OF COMMUNITIES SURVEYED IN WHICH PRIMARY SCHOOL HAS A LIBRARY

A State-to-State Comparison

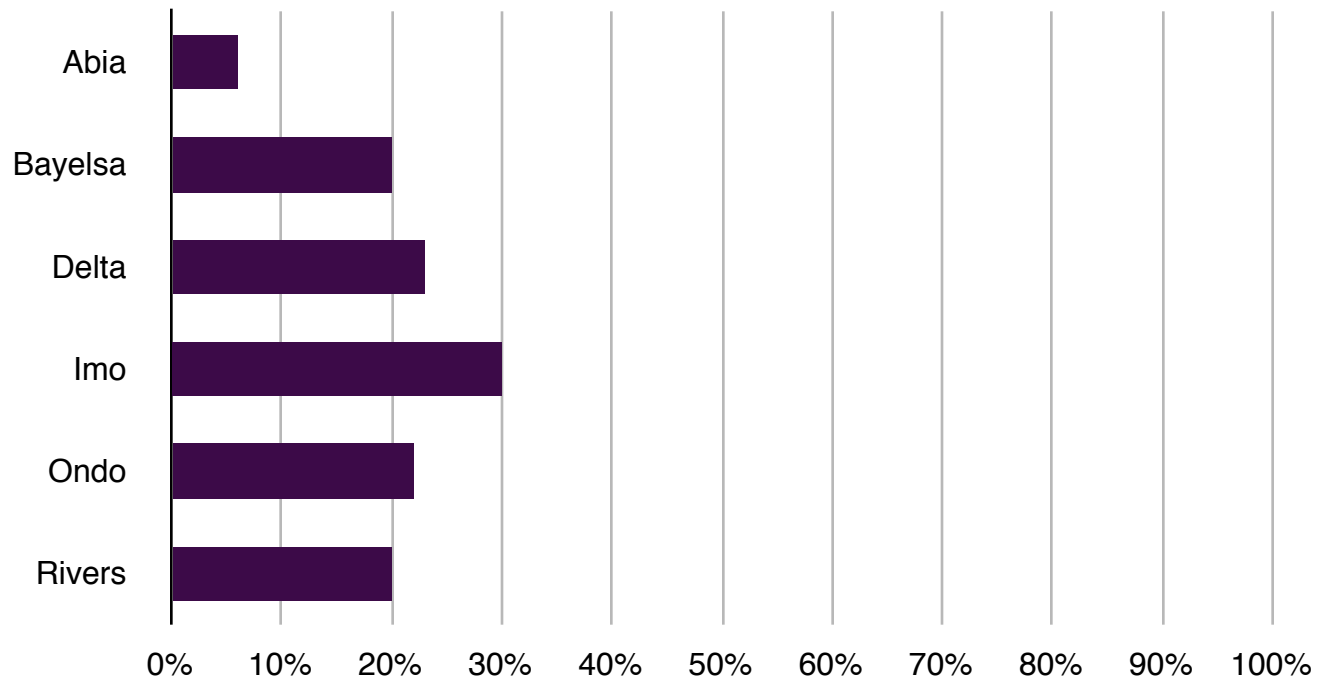
■ % of Communities Surveyed



PERCENTAGE OF COMMUNITIES SURVEYED IN WHICH PRIMARY SCHOOL HAS TOILET FOR CHILDREN

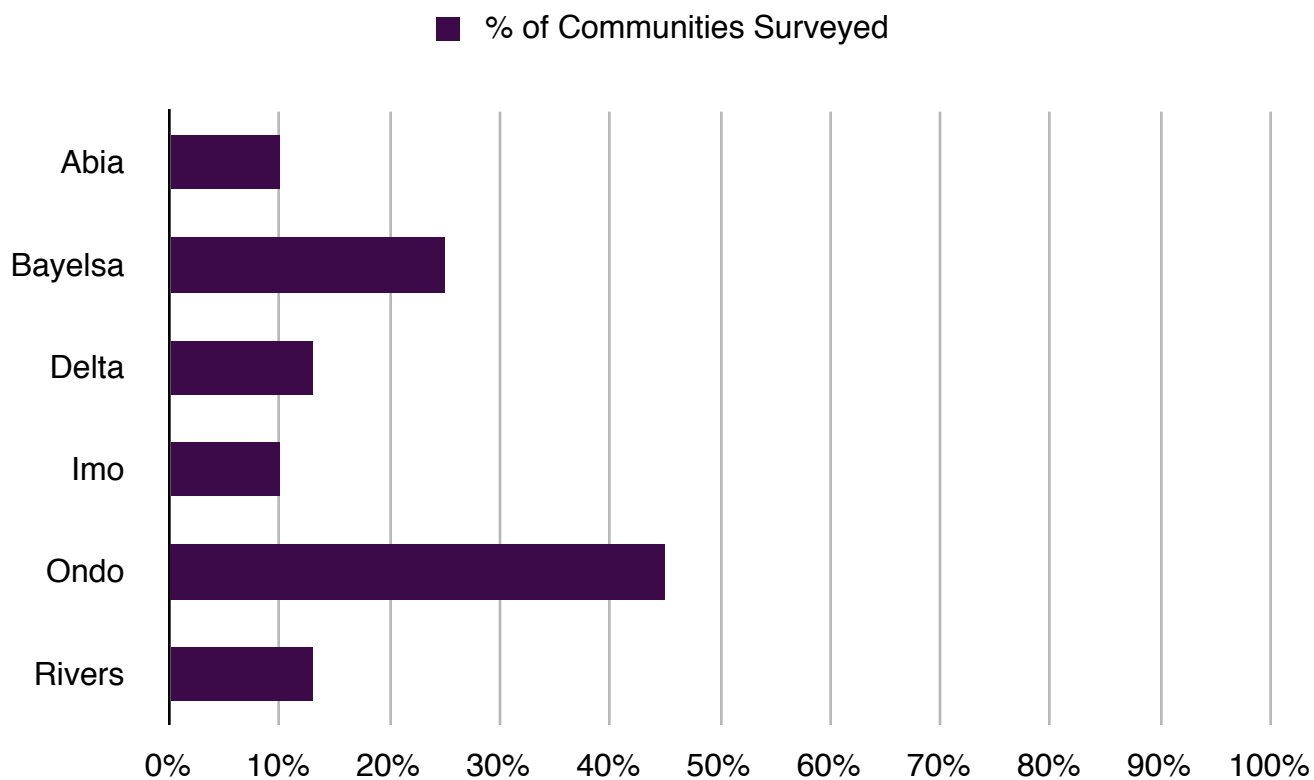
A State-to-State Comparison

■ % of Communities Surveyed



PERCENTAGE OF COMMUNITIES SURVEYED IN WHICH PRIMARY SCHOOL HAS A DESK AND CHAIR FOR EACH CHILD

A State-to-State Comparison



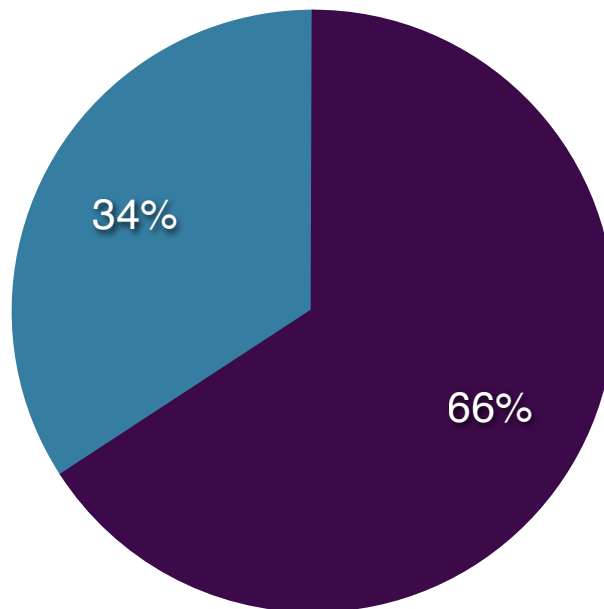
NOTE: All communities in Bayelsa State that had Primary School's with desks and chairs for each child were located in Sagbama LGA. No community's primary school in Kolokuma/Opokuma LGA had desks and chairs for each child.

4. FOCUS GROUP QUESTION: Do parents pay for the textbooks where their children attend Primary School?

In 79 of the 120 communities, the parents pay for the textbooks that their children use in Primary School.

In 41 of the 120 communities, the government provides free textbooks for Primary School children.

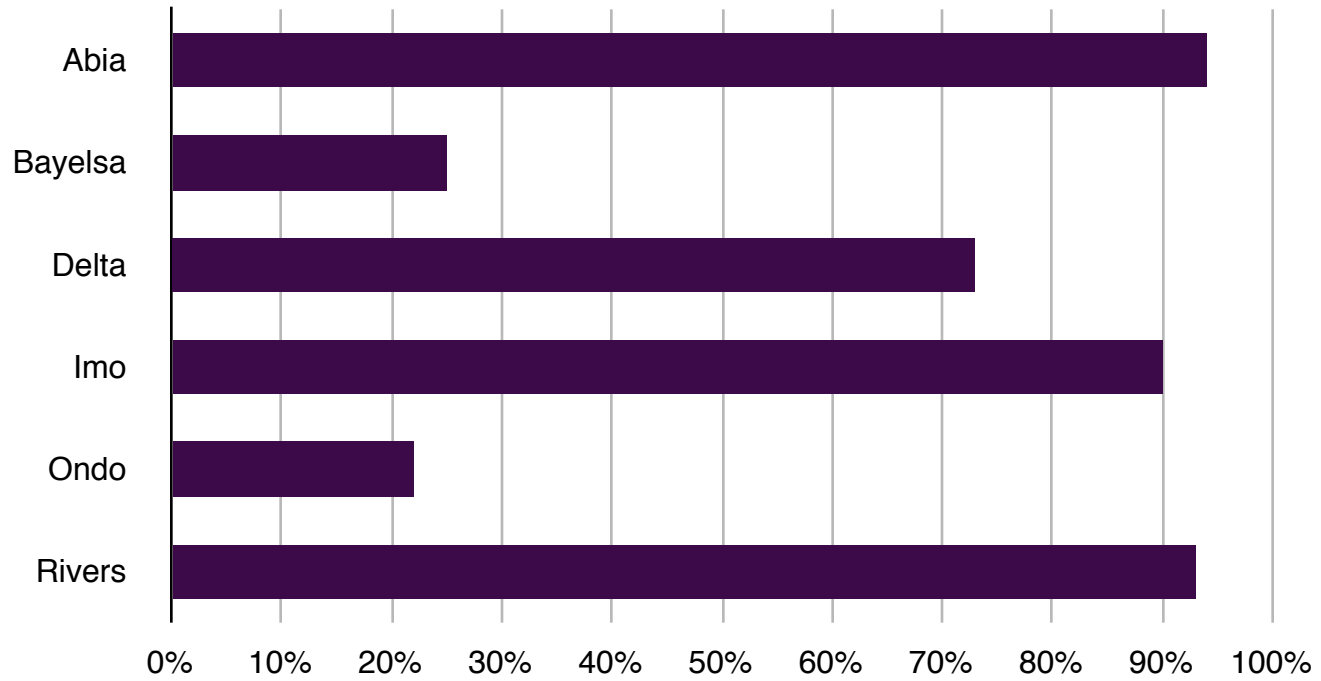
- parents pay for Primary School textbooks
- government provides free Primary School textbooks



PERCENTAGE OF COMMUNITIES SURVEYED IN WHICH PARENTS PAY FOR PRIMARY SCHOOL TEXTBOOKS

A State-to-State Comparison

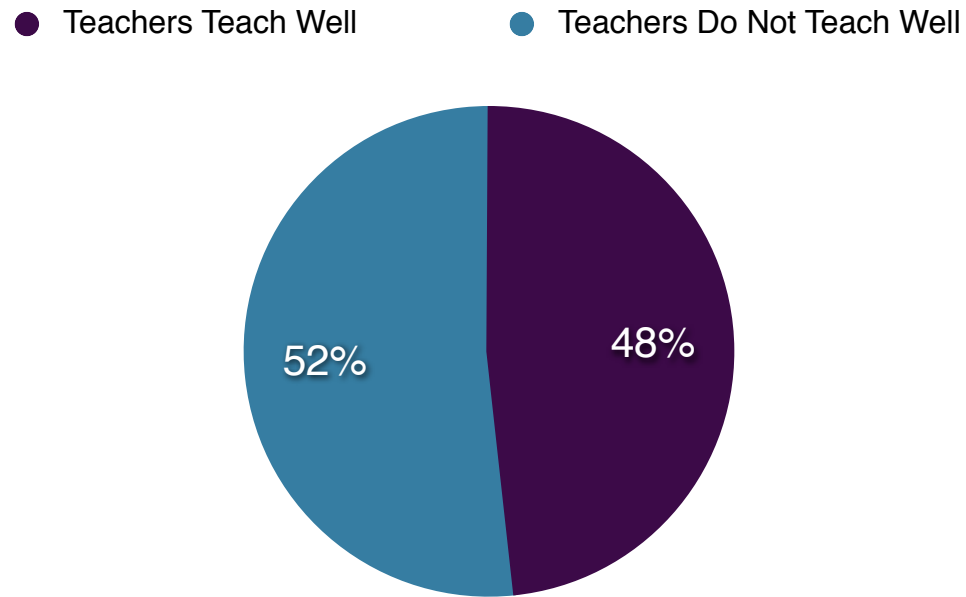
■ % of Communities Surveyed



FG QUESTION: Do Primary School teachers “dey try?” [do they teach well; in your opinion, are they qualified?]

In 58 of the 120 communities, respondents say that the Primary School teachers “dey try.”

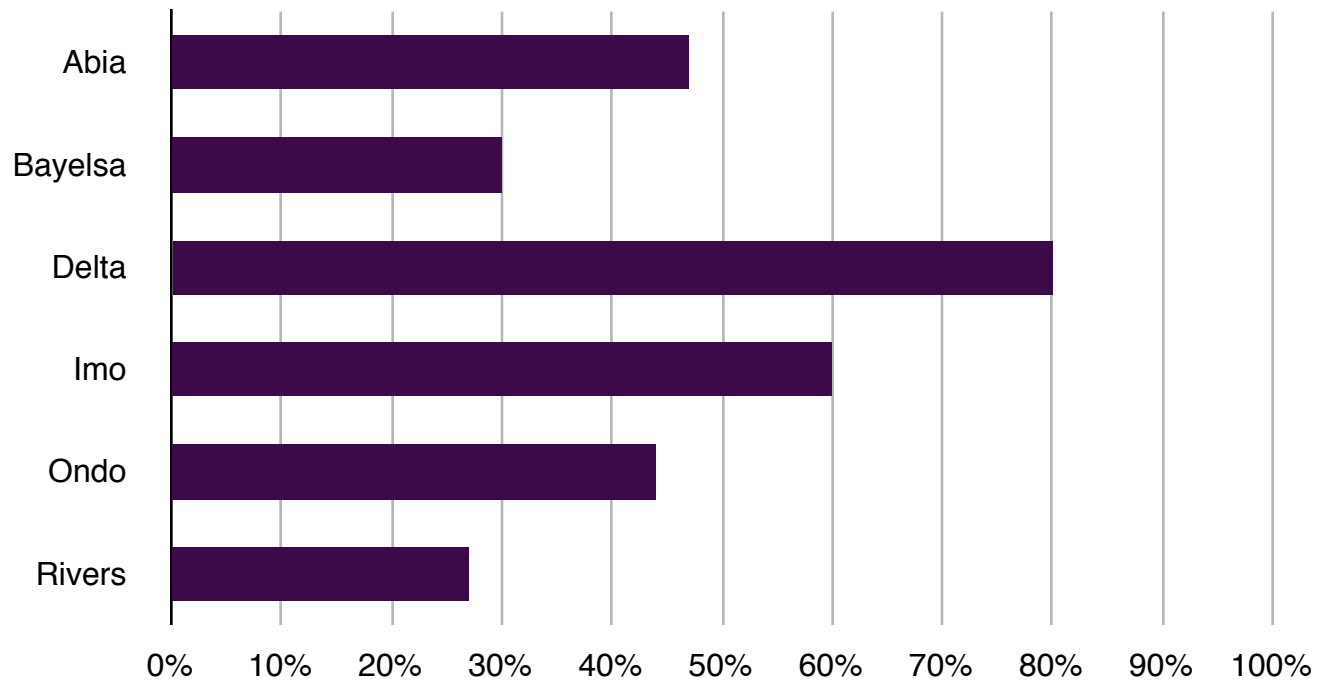
In 62 of the 120 communities, respondents say that the Primary School teachers “no dey try.”



PERCENTAGE OF COMMUNITIES SURVEYED IN WHICH YOUNG WOMEN FOCUS GROUPS SAY THAT TEACHERS “NO DEY TRY”

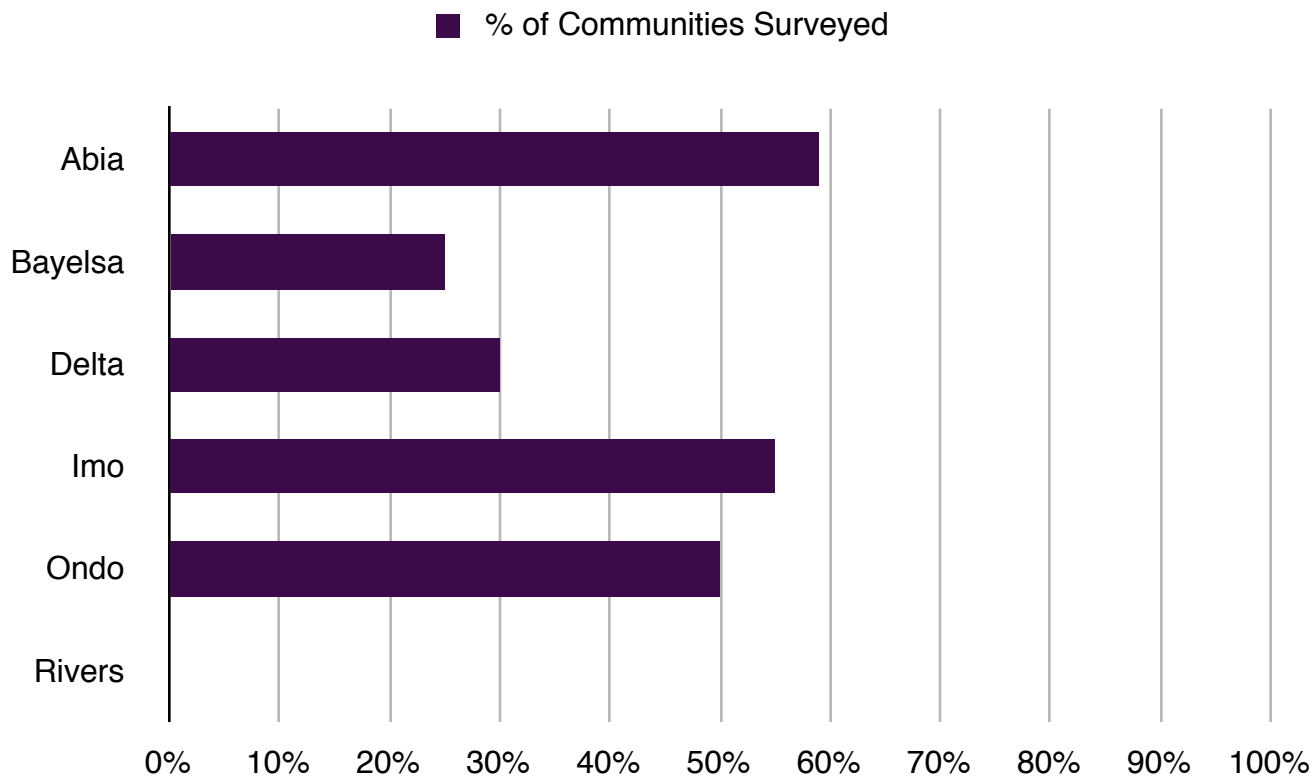
A State-to-State Comparison

■ % of Communities Surveyed



**PERCENTAGE OF COMMUNITIES SURVEYED IN WHICH
YOUNG WOMEN FOCUS GROUPS SAY THAT TEACHERS DO NOT TEACH REGULARLY
(Monday-Friday, mornings and afternoons)**

A State-to-State Comparison



EDUCATION

BY

STATE,

LOCAL GOVERNMENT AREA, and

COMMUNITY

ABIA STATE

Ukwa East LGA and Ukwa West LGA

COMMUNITIES IN WHICH THE READING ABILITY OF THE YOUNGER GENERATION APPEARS TO HAVE FALLEN BELOW THE READING ABILITY OF THE OLDER GENERATION*

Ukwa East LGA:

Younger Men's Reading Ability Appears to Have Fallen Below Older Men's Reading Ability in:

Akirika Nta Community

Obuozu (Ikwoorieator West) Community

Ohambele Community

Obohia Community

Ohuru Ndoki Community

Younger Women's Reading Ability Appears to Have Fallen Below Older Women's Reading Ability in:

Okotoko Community

Ukwa West LGA:

Younger Men's Reading Ability Appears to Have Fallen Below Older Men's Reading Ability in:

Umuorie Community

Umuokwor Asa Community

Umuiku Community

* Based on Responses of Individual Participants in Focus Groups.

1. Focus Group Question: How many of you [in this room] can read a book out loud to another person?

STATE	LGA	COMMUNITY	OLDER MEN	YOUNGER MEN	YOUNGER WOMEN	OLDER WOMEN
Abia	Ukwa East	Akirika Nta	71%	41%	46%	21%
		Obuozu (Ikwuorieator West)	87%	15%	100%	40%
		Azumini	88%	94%	56%	29%
		Obeaku	85%	100%	100%	60%
		Ohambele	100%	60%	86%	50%
		Obohia	88%	50%	100%	29%
		Okotoko	67%	76%	60%	67%
		Akwete	100%	100%	92%	94%
		Ohuru Ndoki	87%	85%	100%	87%
		Percentage of Total	86%	67%	77%	50%
Abia	Ukwa West	Owaza	100%	100%	100%	100%
		Umudiobia	50%	58%	100%	47%
		Obehie	100%	100%	100%	29%
		Umuorie	100%	55%	47%	44%

STATE	LGA	COMMUNITY	OLDER MEN	YOUNGER MEN	YOUNGER WOMEN	OLDER WOMEN
		Umuokwor Asa	30%	29%	100%	25%
		Ezendioma	76%	50%	100%	36%
		Umuebulungwu	50%	91%	38%	10%
		Umuiku	88%	48%	79%	53%
		Percentage of Total	71%	68%	74%	35%

2. Focus Group Question and School Administrator/Teacher Interview: Does your community have a primary school? If yes, how many students (boys/girls) and how many teachers?

STATE	LGA	COMMUNITY	PRIMARY SCHOOL?	# OF STUDENTS	# OF BOYS	# OF GIRLS	# OF TEACHERS	STUDENT/TEACHER RATIO
Abia	Ukwa East	Akirika Nta	no	n/a	n/a	n/a	n/a	n/a
		Obuozu (Ikwuorieator West)	yes	195	95	100	15	13 to 1
		Azumini	yes	155	73	82	20	8 to 1
		Obeaku	yes	700	400	300	8	87 to 1
		Ohambele	yes	310	150	160	23	14 to 1
		Obohia	yes	270	120	150	18	15 to 1
		Okotoko	yes	95	52	43	8	12 to 1
		Akwete	yes	270	120	150	27	10 to 1
		Ohuru Ndoki	yes	220	100	120	17	13 to 1
Abia	Ukwa West	Owaza	yes	370	220	150	15	25 to 1
		Umudiobia	yes	322	165	157	25	13 to 1

STATE	LGA	COMMUNITY	PRIMARY SCHOOL?	# OF STUDENTS	# OF BOYS	# OF GIRLS	# OF TEACHERS	STUDENT/TEACHER RATIO
		Obehie	yes	542	259	283	32	17 to 1
		Umuorie	yes	110	62	48	10	11 to 1
		Umuokwor Asa	no	115	50	65	8	14 to 1
		Ezendioma	yes	100	40	60	12	8 to 1
		Umuebulungwu	no	190	90	100	10	19 to 1
		Umuiku	yes	200	120	80	9	22 to 1

- 3. Focus Group Questions:**
- Do all the children in Primary School have a desk and chair?**
 - Are the textbooks in Primary School free to the students?**
 - Does the Primary School have a functioning library? Toilets for children?**
 - What is the monthly salary of Primary School teachers? Is it paid regularly?**

STATE	LGA	COMMUNITY	DESK AND CHAIRS FOR EVERY CHILD?	DO PARENTS PAY FOR PS TEXT-BOOKS?	FUNCTION-ING LIBRARY?	TOILETS FOR PUPILS?	MONTHLY SALARY OF PS TEACHERS (in Naira)	ARE TEACHERS PAID REGULARLY ?
Abia	Ukwa East	Akirika Nta (PS not in community)	no	no	no	no	don't know	don't know
		Obuozu (Ikwoorieator West)	no	yes	no	no	11,000	yes
		Azumini	no	yes	no	no	23,392	yes
		Obeaku	no	yes	no	no	12,000	yes
		Ohambele	no	yes	no	no	13,000	yes
		Obohia	no	yes	no	no	12,200	yes
		Okotoko	no	yes	no	no	12,000	yes
		Akwete	yes	yes	no	no	13,000	yes
		Ohuru Ndoki	no	yes	no	no	13,000	yes

STATE	LGA	COMMUNITY	DESK AND CHAIRS FOR EVERY CHILD?	DO PARENTS PAY FOR PS TEXT-BOOKS?	FUNCTION-ING LIBRARY?	TOILETS FOR PUPILS?	MONTHLY SALARY OF PS TEACHERS (in Naira)	ARE TEACHERS PAID REGULARLY ?
Abia	Ukwa West	Owaza	no	yes	no	no	10,000	no
		Umudobia	no	yes	no	no	9,240	no
		Obehie	no	yes	no	no	6,653	no
		Umuorie	yes	yes	no	yes	10,000	no
		Umuokwor Asa	no	yes	no	no	13,000	no
		Ezendioma	no	yes	no	no	10,500	no
		Umuebulungwu	no	yes	no	no	10,000	no
		Umuiku	no	yes	no	no	10,360	yes

5. Focus Group Question (Younger Women Focus Group): Do the teachers “dey try” or do well teaching? Do teachers teach regularly (Monday thru Friday, morning and afternoon)? Are there teachers quarters available for the teachers?

STATE	LGA	COMMUNITY	Teachers Try?	Teach Regularly?	Teachers Quarters Available?
Abia	Ukwa East	Akirika Nta	no	no	no
		Obuozu (Ikwuorieator West)	no	no	yes
		Azumini	yes	no	no
		Obeaku	yes	no	yes
		Ohambele	no	no	no
		Obohia	no	no	no
		Okotoko	yes	yes	no
		Akwete	yes	yes	no
		Ohuru Ndoki	no	no	no
Abia	Ukwa West	Owaza	no	no	no
		Umudiobia	yes	yes	no
		Obehie	yes	yes	no

STATE	LGA	COMMUNITY	Teachers Try?	Teach Regularly?	Teachers Quarters Available?
		Umuorie	yes	yes	no
		Umuokwor Asa	yes	yes	no
		Ezendioma	no	no	no
		Umuebulungwu	no	no	no
		Umuiku	yes	yes	no

BAYELSA STATE

Kolokuma/Opokuma LGA

and

Sagbama LGA

**COMMUNITIES IN WHICH THE READING ABILITY OF THE YOUNGER GENERATION
APPEARS TO HAVE FALLEN BELOW THE READING ABILITY OF THE OLDER GENERATION***

Kolokuma/Opokuma LGA

Younger Men's Reading Ability Appears to Have Fallen Below Older Men's Reading Ability in:

Sabagreia Community
Ayakoroama Community
Olobiri Community

Younger Women's Reading Ability Appears to Have Fallen Below Older Women's Reading Ability in:

Igbedi Community

Sagbama LGA

Younger Men's Reading Ability Appears to Have Fallen Below Older Men's Reading Ability in:

Odoni Community
Bulou-Orua Community
Ebedebiri Community

Younger Women's Reading Ability Appears to Have Fallen Below Older Women's Reading Ability in:

Toru-Ebeni Community
Adagbabiri Community

1. Focus Group Question: How many of you [in this room] can read a book out loud to another person?

STATE	LGA	COMMUNITY	OLDER MEN	YOUNGER MEN	YOUNGER WOMEN	OLDER WOMEN
Bayelsa	Kolokuma/ Opokuma	Igbedi	100%	100%	14%	18%
		Okoloba	100%	100%	60%	50%
		Sabagreia	100%	50%	83%	50%
		Kaiama	100%	100%	100%	20%
		Ayibabiri	53%	91%	79%	27%
		Orubiri	100%	100%	83%	29%
		Ayakoroama	100%	93%	100%	18%
		Akaranbiri	64%	71%	28%	14%
		Odi	58%	100%	100%	32%
		Olobiri	58%	0%	53%	17%
		Average Percentage	82%	78%	65%	25%
Bayelsa	Sagbama	Toru-Ebeni	29%	50%	0%	30%
		Trofani	67%	70%	36%	14%
		Odoni	91%	55%	33%	11%

STATE	LGA	COMMUNITY	OLDER MEN	YOUNGER MEN	YOUNGER WOMEN	OLDER WOMEN
		Agbere	86%	100%	67%	33%
		Adagbabiri	76%	100%	33%	100%
		Sagbama	50%	71%	43%	25%
		Bulou-Orua	91%	70%	36%	29%
		Ebedebiri	73%	27%	50%	13%
		Tungbo-Ebe	100%	100%	63%	16%
		Toru-Angiama	24%	25%	20%	6%
		Average Percentage	68%	64%	40%	22%

2. Focus Group Question and School Administrator/Teacher Interview: Does your community have a primary school? If yes, how many students (boys/girls) and how many teachers?

STATE	LGA	COMMUNITY	PRIMARY SCHOOL?	# OF STUDENTS	# OF BOYS	# OF GIRLS	# OF TEACHERS	STUDENT/TEACHER RATIO
Bayelsa	Kolokuma	Igbedi	yes	7000	4000	3000	30	233 to 1
		Okoloba	yes	340	140	200	28	12 to 1
		Sabagreia	yes	1561	820	741	83	19 to 1
		Kaiama	yes	3194	1556	1638	80	a
		Ayibabiri	no	n/a	n/a	n/a	n/a	n/a
		Orubiri	no	n/a	n/a	n/a	n/a	n/a
		Ayakoroama	no	n/a	n/a	n/a	n/a	n/a
		Akaranbiri	no	n/a	n/a	n/a	n/a	n/a
		Odi	yes	2362	1143	1219	54	45 to 1
		Olobiri	yes	no re- sponse	no re- sponse	no re- sponse	no re- sponse	no re- sponse
Bayelsa	Sagbama	Toru-Ebeni	yes	155	75	80	15	10 to 1
		Trofani	yes	2700	1300	1400	16	169 to 1
		Odoni	yes	1188	732	456	15	79 to 1

STATE	LGA	COMMUNITY	PRIMARY SCHOOL?	# OF STUDENTS	# OF BOYS	# OF GIRLS	# OF TEACHERS	STUDENT/TEACHER RATIO
		Agbere	yes	400	250	150	11	36 to 1
		Adagbabiri	yes	561	226	335	33	17 to 1
		Sagbama	yes	1100	500	600	67	16 to 1
		Bulou-Orua	yes	550	290	260	37	15 to 1
		Ebedebiri	yes	600	300	300	28	21 to 1
		Tungbo-Ebe	yes	450	200	250	25	18 to 1
		Toru-Angiama	yes	959	492	467	12	41 to 1

- 3. Focus Group Questions:** Do all the children in Primary School have a desk and chair?
 Are the textbooks in Primary School free to the students or do parents pay?
 Does the Primary School have a functioning library? Toilets for children?
 What is the monthly salary of Primary School teachers? Is it paid regularly?

STATE	LGA	COMMUNITY	DESK AND CHAIRS FOR EVERY CHILD?	DO PARENTS PAY FOR PS TEXT-BOOKS?	FUNCTION-ING LIBRARY?	TOILETS FOR PUPILS?	MONTHLY SALARY OF PS TEACHERS (in Naira)	ARE TEACHERS PAID REGULARLY ?
Bayelsa	Kolokuma	Igbedi	no	yes	no	no	9,000	yes
		Okoloba	no	yes	no	no	20,000	yes
		Sabagreia	no	no	no	no	15,000	yes
		Kaiama	no	yes	no	yes	34,000	yes
		Ayibabiri	no	yes	no	no	n/a	n/a
		Orubiri	no	no	no	no	n/a	n/a
		Ayakoroama	no	yes	no	no	n/a	n/a
		Akaranbiri	no	yes	no	no	n/a	n/a
		Odi	no	yes	no	yes	17,000	yes
		Olobiri	no	no	no	no	no response	no response
Bayelsa	Sagbama	Toru-Ebeni	no	yes	no	no	no idea	yes

STATE	LGA	COMMUNITY	DESK AND CHAIRS FOR EVERY CHILD?	DO PARENTS PAY FOR PS TEXT-BOOKS?	FUNCTION-ING LIBRARY?	TOILETS FOR PUPILS?	MONTHLY SALARY OF PS TEACHERS (in Naira)	ARE TEACHERS PAID REGULARLY ?
		Trofani	yes	no	no	no	30,000	yes
		Odoni	yes	no	no	yes	14,000	no
		Agbere	yes	yes	no	yes	no idea	yes
		Adagbabiri	yes	yes	no	no	15,000	yes
		Sagbama	yes	yes	no	no	15,000	yes
		Bulou-Orua	no	yes	no	no	24,000	yes
		Ebedebiri	no	yes	no	no	13,000	yes
		Tungbo-Ebe	no	yes	no	no	15,000	yes
		Toru-Angiama	no	yes	no	no	21,000	yes

5. Focus Group Question (Younger Women Focus Group): Do the teachers “dey try” or do well teaching? Do teachers teach regularly (Monday thru Friday, morning and afternoon)? Are there teachers quarters available for the teachers?

STATE	LGA	COMMUNITY	Teachers Try?	Teach Regularly?	Teachers Quarters Available?
Bayelsa	Kolokuma	Igbedi	yes	yes	no
		Okoloba	yes	yes	no
		Sabagreia	yes	yes	no
		Kaiama	yes	yes	no
		Ayibabiri	no	no	no
		Orubiri	no	no	no
		Ayakoroama	no	no	no
		Akaranbiri	no	no	no
		Odi	yes	yes	no
		Olobiri	no	no	no
Bayelsa	Sagbama	Toru-Ebeni	yes	yes	yes
		Trofani	no	yes	no
		Odoni	yes	yes	no

STATE	LGA	COMMUNITY	Teachers Try?	Teach Regularly?	Teachers Quarters Available?
		Agbere	yes	yes	no
		Adagbabiri	yes	yes	no
		Sagbama	yes	yes	no
		Bulou-Orua	yes	yes	no
		Ebedebiri	yes	yes	no
		Tungbo-Ebe	yes	yes	no
		Toru-Angiama	yes	yes	no

DELTA STATE

Ughelli South LGA,

Uvwie LGA

and

Warri South LGA

**COMMUNITIES IN WHICH THE READING ABILITY OF THE YOUNGER GENERATION
APPEARS TO HAVE FALLEN BELOW THE READING ABILITY OF THE OLDER GENERATION***

Ughelli South LGA:

Younger Men's Reading Ability Appears to Have Fallen Below Older Men's Reading Ability in:

Olodiana Community
Arhagba Community
Usiefrun Community

Younger Women's Reading Ability Appears to Have Fallen Below Older Women's Reading Ability in:

Olodiana Community
Arhagba Community

Uvwie LGA:

Younger Men's Reading Ability Appears to Have Fallen Below Older Men's Reading Ability in:

Erovia Community
Ugboroke Community

Younger Women's Reading Ability Appears to Have Fallen Below Older Women's Reading Ability in:

Ugbomro Community

Warri South LGA:

Younger Men's Reading Ability Appears to Have Fallen Below Older Men's Reading Ability in:

Ijala Community
Usele Community
Ajiga Community
Orugbo Community

Younger Women's Reading Ability Appears to Have Fallen Below Older Women's Reading Ability in:

Ijala Community

* Based on Participant's Responses in Focus Groups.

1. Focus Group Question: How many of you [in this room] can read a book out loud to another person?

STATE	LGA	COMMUNITY	OLDER MEN	YOUNGER MEN	YOUNGER WOMEN	OLDER WOMEN
Delta	Ughelli South	Ekakpamre	83%	100%	100%	0%
		Otu- Jeremi	86%	100%	29%	27%
		Iwhrekan	67%	73%	17%	0%
		Okpavuerhe	21%	21%	14%	5%
		Olodiamama	12%	10%	4%	8%
		Arhagba	60%	57%	6%	12%
		Usiefrun	53%	41%	67%	8%
		Ewu	35%	76%	63%	9%
		Oginibo	29%	55%	16%	8%
		Okwagbe Waterside	27%	71%	31%	15%
		Average Percentage	36%	50%	27%	9%
Delta	Uvwie	Jakpa	38%	67%	67%	9%
		Ugbomro	44%	100%	11%	50%
		Ugbolokposo	67%	67%	100%	42%

STATE	LGA	COMMUNITY	OLDER MEN	YOUNGER MEN	YOUNGER WOMEN	OLDER WOMEN
		Ohorhe 1	29%	100%	57%	15%
		Ugborikoko	47%	74%	67%	50%
		Erovie	73%	10%	75%	0%
		Ugboroke	86%	26%	31%	6%
		Ebrumede	71%	100%	100%	75%
		Alaka	71%	81%	90%	42%
		Urhumarho/Okotogbo	73%	88%	86%	22%
		Percentage of Total	62%	69%	77%	30%
Delta	Warri South	Aja-Etan	100%	100%	25%	64%
		Ijala	100%	84%	83%	100%
		Usele	91%	76%	77%	40%
		Ekurede Itsekiri	79%	100%	57%	43%
		Ugbori	93%	100%	100%	77%
		Ajigba	100%	62%	100%	79%
		Ugbuwangue	71%	100%	79%	14%
		Obodo	33%	82%	14%	11%

STATE	LGA	COMMUNITY	OLDER MEN	YOUNGER MEN	YOUNGER WOMEN	OLDER WOMEN
		Orugbo	100%	64%	63%	18%
		Omadino	60%	87%	75%	9%
		Average Percentage	82%	84%	71%	43%

2. Focus Group Question and School Administrator/Teacher Interview: Does your community have a primary school? If yes, how many students (boys/girls) and how many teachers?

STATE	LGA	COMMUNITY	PRIMARY SCHOOL?	# OF STUDENTS	# OF BOYS	# OF GIRLS	# OF TEACHERS	STUDENT/TEACHER RATIO
Delta	Ughelli South	Ekakpamre	yes	335	235	100	32	10 to 1
		Otu- Jeremi	yes	1209	601	608	38	39 to 1
		Iwhrekan	yes	350	160	190	31	12 to 1
		Okpavuerhe	yes	205	107	98	17	12 to 1
		Olodiana	yes	250	100	150	14	18 to 1
		Arhagba	yes	120	54	66	9	13 to 1
		Usiefrun	yes	465	220	245	40	12 to 1
		Ewu	yes	670	270	400	40	17 to 1
		Oginibo	yes	450	250	200	39	12 to 1
		Okwagbe Waterside	yes	1678	881	797	43	39 to 1
Delta	Uvwie	Jakpa	no	n/a	n/a	n/a	n/a	n/a
		Ugbomro	yes	865	415	450	24	36 to 1

STATE	LGA	COMMUNITY	PRIMARY SCHOOL?	# OF STUDENTS	# OF BOYS	# OF GIRLS	# OF TEACHERS	STUDENT/TEACHER RATIO
		Ugbolokposo	yes	150	69	81	10	15 to 1
		Ohorhe 1	yes	69	34	35	7	10 to 1
		Ugborikoko	yes	160	100	60	15	11 to 1
		Erovie	yes	2105	537	1568	no response	no response
		Ugboroke	yes	237	119	118	37	6 to 1
		Ebrumede	yes	154	77	77	24	6 to 1
		Alaka	yes	no response	no response	no response	no response	no response
		Urhumarho/ Okotogbo	yes	1273	628	645	145	9 to 1
Delta	Warri South	Aja-Etan	no	n/a	n/a	n/a	n/a	n/a
		Ijala	no	n/a	n/a	n/a	n/a	n/a
		Usele	no	n/a	n/a	n/a	n/a	n/a
		Ekurede Itsekiri	yes	570	290	280	38	15 to 1
		Ugbori	yes	570	290	280	38	15 to 1

STATE	LGA	COMMUNITY	PRIMARY SCHOOL?	# OF STUDENTS	# OF BOYS	# OF GIRLS	# OF TEACHERS	STUDENT/TEACHER RATIO
		Ajigba	no	n/a	n/a	n/a	n/a	n/a
		Ugbuwangue	yes	329	155	174	23	14 to 1
		Obodo	yes	no response	no re- sponse	no re- sponse	no response	no re- sponse
		Orugbo	yes	240	123	117	10	24 to 1
		Omadino	yes	265	130	135	20	13 to 1

- 3. Focus Group Questions:**
- Do all the children in Primary School have a desk and chair?**
 - Are the textbooks in Primary School free to the students or do parents pay?**
 - Does the Primary School have a functioning library? Toilets for children?**
 - What is the monthly salary of Primary School teachers? Is it paid regularly?**

STATE	LGA	COMMUNITY	DESK AND CHAIRS?	DO PARENTS PAY FOR PS TEXT-BOOKS?	FUNCTION-ING LIBRARY?	TOILETS FOR PUPILS?	MONTHLY SALARY OF PS TEACHERS (in Naira)	ARE TEACHERS PAID REGULARLY ?
Delta	Ughelli South	Ekakpamre	no	yes	no	no	15,250	yes
		Otu- Jeremi	no	yes	no	yes	no response	no
		Iwhrekan	no	yes	no	no	18,500	yes
		Okpavuerhe	no	yes	no	yes	12,800	no
		Olodiamma	no	yes	no	no	15,200	yes
		Arhagba	no	yes	no	no	11,520	yes
		Usiefrun	no	yes	no	yes	no response	yes
		Ewu	no	yes	no	no	15,000	yes
		Oginibo	no	yes	no	yes	14,000	yes
		Okwagbe Waterside	no	yes	no	no	13,300	yes

STATE	LGA	COMMUNITY	DESK AND CHAIRS?	DO PARENTS PAY FOR PS TEXT-BOOKS?	FUNCTION -ING LIBRARY?	TOILETS FOR PUPILS?	MONTHLY SALARY OF PS TEACHERS (in Naira)	ARE TEACHERS PAID REGULARLY ?
Delta	Uvwie	Jakpa	n/a	n/a	n/a	n/a	n/a	n/a
		Ugbomro	no	yes	no	yes	11,520	yes
		Ugbolokposo	no	yes	no	no	no response	yes
		Ohorhe 1	no	yes	no	no	11,500	yes
		Ugborikoko	yes	yes	no	no	no response	yes
		Erovie	no	yes	no	no	24,640	no
		Ugboroke	no	yes	no	no	no response	no
		Ebrumede	no	yes	no	yes	13,856	yes
		Alaka	no	yes	no	no	no response	no response
		Urhumarho/ Okotogbo	no	no	no	no	14,500	no
Delta	Warri South	Aja-Etan	no	no	n/a	n/a	n/a	n/a
		Ijala	no	yes	n/a	n/a	n/a	n/a
		Usele	no	yes	n/a	n/a	n/a	n/a

STATE	LGA	COMMUNITY	DESK AND CHAIRS?	DO PARENTS PAY FOR PS TEXT-BOOKS?	FUNCTION-ING LIBRARY?	TOILETS FOR PUPILS?	MONTHLY SALARY OF PS TEACHERS (in Naira)	ARE TEACHERS PAID REGULARLY ?
		Ekurede Itsekiri	yes	yes	no	no	15,338	yes
		Ugbori	yes	yes	no	no	15,338	yes
		Ajigba	no	yes	n/a	n/a	n/a	n/a
		Ugbuwangue	no	yes	no	yes	18,500	yes
		Obodo	no	yes	no	no	no response	no response
		Orugbo	no	yes	no	no	no response	yes
		Omadino	yes	yes	no	no	15,000	yes

5. Focus Group Question (Younger Women Focus Group): Do the teachers “dey try” or do well teaching? Do teachers teach regularly (Monday thru Friday, morning and afternoon)? Are there teachers quarters available for the teachers?

STATE	LGA	COMMUNITY	Teachers Try?	Teach Regularly?	Teachers Quarters Available?
Delta	Ughelli South	Ekakpamre	no	yes	yes
		Otu- Jeremi	no	no	yes
		Iwhrekan	yes	yes	no
		Okpavuerhe	no	yes	no
		Olodiana	yes	yes	yes
		Arhagba	yes	yes	no
		Usiefrun	yes	yes	no
		Ewu	no	no	no
		Oginibo	yes	yes	no
		Okwagbe Waterside	no	yes	no
Delta	Uvwie	Jakpa	no	no	no
		Ugbomro	no	yes	no

STATE	LGA	COMMUNITY	Teachers Try?	Teach Regularly?	Teachers Quarters Available?
		Ugbolokposo	yes	yes	no
		Ohorhe 1	no	yes	no
		Ugborikoko	yes	yes	no
		Erovie	yes	yes	no
		Ugboroke	yes	yes	no
		Ebrumede	yes	yes	no
		Alaka	yes	yes	no
		Urhumarho/ Okotogbo	yes	yes	no
Delta	Warri South	Aja-Etan	no	no	no
		Ijala	no	no	no
		Usele	no	no	no
		Ekurede Itsekiri	yes	yes	no
		Ugbori	yes	yes	no
		Ajigba	no	no	no
		Ugbuwangue	yes	yes	no

STATE	LGA	COMMUNITY	Teachers Try?	Teach Regularly?	Teachers Quarters Available?
		Obodo	no	no	no
		Orugbo	yes	no	no
		Omadino	no	no	yes

IMO STATE

Oguta LGA

and

Ohaji Egbema LGA

**COMMUNITIES IN WHICH THE READING ABILITY OF THE YOUNGER GENERATION
APPEARS TO HAVE FALLEN BELOW THE READING ABILITY OF THE OLDER GENERATION***

Oguta LGA:

Younger Men's Reading Ability Appears to Have Fallen Below Older Men's Reading Ability in:

Mgbele Community
Umunwama-Izombe Community
Aborshi-Izombe Community
Egbuoma Community
Obudi Agwa Community

Younger Women's Reading Ability Appears to Have Fallen Below Older Women's Reading Ability in:

Aborshi-Izombe Community
Obudi Agwa Community

Ohaji Egbema LGA:

Younger Men's Reading Ability Appears to Have Fallen Below Older Men's Reading Ability in:

Etekwuru Community
Ihie Community
Mmahu Community
Opuoma Community

* Based on Participant's Responses in Focus Groups.

1. Focus Group Question: How many of you [in this room] can read a book out loud to another person?

STATE	LGA	COMMUNITY	OLDER MEN	YOUNGER MEN	YOUNGER WOMEN	OLDER WOMEN		
Imo	Oguta	Ndi-Uloukwu Izombe	56%	100%	88%	24%		
		Mgbele	53%	52%	62%	33%		
		Ndionyemaobi	40%	100%	75%	33%		
		Egwe	76%	100%	100%	62%		
		Ejemekwuru	66%	100%	100%	71%		
		Umunwama-Izombe	83%	25%	100%	88%		
		Eziorsu	72%	100%	100%	43%		
		Aborshi-Izombe	63%	30%	38%	67%		
		Egbuoma	56%	51%	100%	25%		
		Obudi Agwa	77%	53%	57%	61%		
				Average Percentage	64%	69%	83%	48%
Imo	Ohaji-Egbema	Umuapu	21%	100%	53%	23%		
		Obitti	53%	100%	70%	15%		
		Umuagwo	100%	100%	100%	56%		

STATE	LGA	COMMUNITY	OLDER MEN	YOUNGER MEN	YOUNGER WOMEN	OLDER WOMEN
		Etekwuru	85%	69%	47%	45%
		Ihie	77%	68%	41%	13%
		Obosima	65%	100%	75%	55%
		Mmahu	90%	50%	100%	25%
		Opuoma	63%	29%	15%	15%
		Obiakpu	100%	100%	58%	49%
		Obokofia	74%	100%	75%	50%
		Average Percentage	70%	72%	58%	35%

2. Focus Group Question and School Administrator/Teacher Interview: Does your community have a primary school? If yes, how many students (boys/girls) and how many teachers?

STATE	LGA	COMMUNITY	PRIMARY SCHOOL?	# OF STUDENTS	# OF BOYS	# OF GIRLS	# OF TEACHERS	STUDENT/TEACHER RATIO
Imo	Oguta	Ndi-Uloukwu Izombe	yes	156	84	72	14	11 to 1
		Mgbele	yes	75	30	45	4	19 to 1
		Ndionyemaobi	yes	150	70	80	6	25 o 1
		Egwe	yes	400	150	250	12	33 to 1
		Ejemekwuru	yes	500	220	280	8	63 to 1
		Umunwama- Izombe	yes	560	200	360	12	47 to 1
		Eziorsu	yes	380	180	200	5	76 to 1
		Aborshi-Izombe	yes	380	130	250	14	27 to 1
		Egbuoma	yes	165	75	90	7	24 to 1
		Obudi Agwa	yes	240	110	130	7	34 to 1
Imo	Ohaji- Egbema	Umuapu	yes	200	50	150	6	33 to 1
		Obitti	yes	330	200	130	5	66 to 1

STATE	LGA	COMMUNITY	PRIMARY SCHOOL?	# OF STUDENTS	# OF BOYS	# OF GIRLS	# OF TEACHERS	STUDENT/TEACHER RATIO
		Umuagwo	yes	520	270	250	5	104 to 1
		Etekwuru	yes	460	320	140	5	92 to 1
		Ihie	yes	300	110	190	5	60 to 1
		Obosima	yes	674	262	412	13	52 to 1
		Mmahu	yes	130	60	70	7	19 to 1
		Opuoma	yes	108	60	48	3	60 to 1
		Obiakpu	yes	330	180	150	4	83 to 1
		Obokofia	yes	750	450	300	9	83 to 1

- 3. Focus Group Questions:**
- Do all the children in Primary School have a desk and chair?**
 - Are the textbooks in Primary School free to the students or do parents pay?**
 - Does the Primary School have a functioning library? Toilets for children?**
 - What is the monthly salary of Primary School teachers? Is it paid regularly?**

STATE	LGA	COMMUNITY	DESK AND CHAIRS?	DO PARENTS PAY FOR PS TEXT-BOOKS?	FUNCTION-ING LIBRARY?	TOILETS FOR PUPILS?	MONTHLY SALARY OF PS TEACHERS (in Naira)	ARE TEACHERS PAID REGULARLY ?
Imo	Oguta	Ndi-Uloukwu Izombe	no	yes	no	no	16,000	yes
		Mgbele	no	yes	no	yes	15,000	yes
		Ndionyemaobi	no	yes	no	no	16,000	yes
		Egwe	no	yes	no	no	16,000	yes
		Ejemekwuru	no	yes	yes	yes	16,000	yes
		Umunwama-Izombe	no	yes	no	no	16,000	yes
		Eziorsu	no	yes	no	no	11,000	yes
		Aborshi-Izombe	no	yes	no	no	16,000	yes
		Egbuoma	no	yes	no	no	16,000	yes
		Obudi Agwa	no	yes	no	no	16,000	yes

STATE	LGA	COMMUNITY	DESK AND CHAIRS?	DO PARENTS PAY FOR PS TEXT-BOOKS?	FUNCTION-ING LIBRARY?	TOILETS FOR PUPILS?	MONTHLY SALARY OF PS TEACHERS (in Naira)	ARE TEACHERS PAID REGULARLY ?
Imo	Ohaji-Egbe ma	Umuapu	no	yes	no	no	11,000	yes
		Obitti	no	yes	no	no	25,000	yes
		Umuagwo	no	yes	no	yes	15,000	yes
		Etekwuru	yes	yes	no	no	25,000	no
		Ihie	no	yes	no	yes	11,000	yes
		Obosima	no	yes	no	yes	25,000	yes
		Mmahu	no	yes	no	no	15,000	no
		Opuoma	no	yes	no	no	25,730	yes
		Obiakpu	yes	yes	no	yes	20,000	yes
		Obokofia	no	yes	no	no	25,000	yes

5. Focus Group Question (Younger Women Focus Group): Do the teachers “dey try” or do well teaching? Do teachers teach regularly (Monday thru Friday, morning and afternoon)? Are there teachers quarters available for the teachers?

STATE	LGA	COMMUNITY	Teachers Try?	Teach Regularly?	Teachers Quarters Available?
Imo	Oguta	Ndi-Uloukwu Izombe	yes	yes	no
		Mgbele	no	no	no
		Ndionyemaobi	no	no	no
		Egwe	yes	yes	no
		Ejemekwuru	no	yes	no
		Umunwama- Izombe	yes	yes	no
		Eziorsu	no	no	no
		Aborshi-Izombe	no	no	no
		Egbuoma	yes	yes	no
		Obudi Agwa	yes	yes	no
				no	
Imo	Ohaji-Egbema	Umuapu	no	no	no
		Obitti	no	no	no

STATE	LGA	COMMUNITY	Teachers Try?	Teach Regularly?	Teachers Quarters Available?
		Umuagwo	yes	yes	no
		Etekwuru	no	no	no
		Ihie	no	no	no
		Obosima	yes	yes	no
		Mmahu	no	no	no
		Opuoma	yes	yes	no
		Obiakpu	no	no	no
		Obokofia	yes	yes	no

ONDO STATE

Ese Odo LGA

and

Ilaje LGA

**COMMUNITIES IN WHICH THE READING ABILITY OF THE YOUNGER GENERATION
APPEARS TO HAVE FALLEN BELOW THE READING ABILITY OF THE OLDER GENERATION***

Ese Odo LGA:

Younger Men's Reading Ability Appears to Have Fallen Below Older Men's Reading Ability in:

Osari Community
Ukpe Community
Arogbo Community
Akpata Community

Ilaje LGA:

Younger Men's Reading Ability Appears to Have Fallen Below Older Men's Reading Ability in:

Mese Community
Gbagira Community
Rewoye Community

Younger Women's Reading Ability Appears to Have Fallen Below Older Women's Reading Ability in:

Aiyetoro Community

* Based on Participant's Responses in Focus Groups.

1. Focus Group Question: How many of you [in this room] can read a book out loud to another person?

STATE	LGA	COMMUNITY	OLDER MEN	YOUNGER MEN	YOUNGER WOMEN	OLDER WOMEN
Ondo	Ese Odo	Osari	70%	0%	33%	0%
		Isreal Kiri	8%	71%	17%	0%
		Biagbini	44%	71%	100%	11%
		Opuba	41%	91%	59%	10%
		Ukpe	48%	33%	14%	11%
		Arogbo	100%	52%	93%	86%
		Akpata	32%	29%	17%	5%
		Igbotu	42%	59%	69%	8%
		Kiribo	47%	94%	84%	27%
		Average Percentage	47%	57%	54%	19%
Ondo	Ilaje	Anehin	13%	67%	57%	7%
		Aiyetoro	74%	79%	50%	57%
		Ode-Mahin	54%	67%	80%	37%
		Mese	44%	43%	43%	10%

STATE	LGA	COMMUNITY	OLDER MEN	YOUNGER MEN	YOUNGER WOMEN	OLDER WOMEN
		Ilowo	22%	38%	41%	12%
		Ojumole	31%	57%	34%	13%
		Gbagira	44%	38%	36%	29%
		Rewoye	50%	17%	48%	12%
		Awoye	15%	43%	90%	14%
		Average Percentage	38%	53%	48%	20%

2. Focus Group Question and School Administrator/Teacher Interview: Does your community have a primary school? If yes, how many students (boys/girls) and how many teachers?

STATE	LGA	COMMUNITY	PRIMARY SCHOOL?	# OF STUDENTS	# OF BOYS	# OF GIRLS	# OF TEACHERS	STUDENT/TEACHER RATIO
Ondo	Ese Odo	Osari	no	n/a	n/a	n/a	n/a	n/a
		Isreal Kiri	no	n/a	n/a	n/a	n/a	n/a
		Biagbini	yes	640	520	120	4	160 to 1
		Opuba	yes	no response	no re- sponse	no re- sponse	no re- sponse	no response
		Ukpe	yes	446	260	186	3	149 to 1
		Arogbo	yes	358	161	197	5	72 to 1
		Akpata	yes	no response	no re- sponse	no re- sponse	no re- sponse	no response
		Igbotu	yes	no response	no re- sponse	no re- sponse	no re- sponse	no response
		Kiribo	yes	650	259	391	10	65 to 1
Ondo	Ilaje	Anehin	no	n/a	n/a	n/a	n/a	n/a
		Aiyetoro	yes	no idea	no idea	no idea	no idea	no idea
		Ode-Mahin	yes	no idea	no idea	no idea	no idea	no idea

STATE	LGA	COMMUNITY	PRIMARY SCHOOL?	# OF STUDENTS	# OF BOYS	# OF GIRLS	# OF TEACHERS	STUDENT/TEACHER RATIO
		Mese	no	n/a	n/a	n/a	n/a	n/a
		Ilowo	yes	365	200	165	5	73 to 1
		Ojumole	yes	60	31	29	3	20 to 1
		Gbagira	no	n/a	n/a	n/a	n/a	n/a
		Rewoye	yes	no idea	no idea	no idea	11	no idea
		Awoye	yes	no idea	no idea	no idea	no idea	no idea

- 3. Focus Group Questions:**
- Do all the children in Primary School have a desk and chair?**
 - Are the textbooks in Primary School free to the students or do parents pay?**
 - Does the Primary School have a functioning library? Toilets for children?**
 - What is the monthly salary of Primary School teachers? Is it paid regularly?**

STATE	LGA	COMMUNITY	DESK AND CHAIRS?	DO PARENTS PAY FOR PS TEXT-BOOKS?	FUNCTION-ING LIBRARY?	TOILETS FOR PUPILS?	MONTHLY SALARY OF PS TEACHERS (in Naira)	ARE TEACHERS PAID REGULARLY ?
Ondo	Ese Odo	Osari	no	no	no	no	n/a	n/a
		Isreal Kiri	no	no	no	no	n/a	n/a
		Biagbini	yes	yes	no	no	10,000	yes
		Opuba	no	yes	no	no	no response	no response
		Ukpe	yes	yes	no	no	24,000	yes
		Arogbo	no	yes	no	no	24,718	yes
		Akpata	no	yes	no	no	no response	no response
		Igbotu	no	yes	no	no	no response	no response
		Kiribo	yes	yes	no	no	24,518	yes
Ondo	Ilaje	Anehin	no	no	no	no	n/a	n/a
		Aiyetoro	yes	yes	no	no	no idea	no idea

STATE	LGA	COMMUNITY	DESK AND CHAIRS?	DO PARENTS PAY FOR PS TEXT-BOOKS?	FUNCTION-ING LIBRARY?	TOILETS FOR PUPILS?	MONTHLY SALARY OF PS TEACHERS (in Naira)	ARE TEACHERS PAID REGULARLY ?
		Ode-Mahin	yes	yes	yes	yes	no idea	no idea
		Mese	no	no	no	no	n/a	n/a
		Ilowo	yes	yes	no	yes	25,318	yes
		Ojumole	yes	yes	no	no	28,318	yes
		Gbagira	no	no	no	no	n/a	n/a
		Rewoye	yes	yes	yes	yes	16,000	yes
		Awoye	yes	yes	no	yes	no idea	no idea

5. Focus Group Question (Younger Women Focus Group): Do the teachers “dey try” or do well teaching? Do teachers teach regularly (Monday thru Friday, morning and afternoon)? Are there teachers quarters available for the teachers?

STATE	LGA	COMMUNITY	Teachers Try?	Teach Regularly?	Teachers Quarters Available?
Ondo	Ese Odo	Osari	no	no	no
		Isreal Kiri	no	no	no
		Biagbini	yes	yes	no
		Opuba	no	yes	no
		Ukpe	yes	yes	no
		Arogbo	yes	yes	no
		Akpata	yes	yes	no
		Igbotu	yes	yes	no
		Kiribo	yes	yes	no
Ondo	Ilaje	Anehin	no	no	no
		Aiyetoro	yes	no	no
		Ode-Mahin	yes	yes	no
		Mese	no	no	no

STATE	LGA	COMMUNITY	Teachers Try?	Teach Regularly?	Teachers Quarters Available?
		Ilowo	yes	yes	yes
		Ojumole	no	no	yes
		Gbagira	no	no	no
		Rewoye	yes	yes	yes
		Awoye	no	no	yes

RIVERS STATE

Ahoda East LGA

and

Obio-Akpor LGA

**COMMUNITIES IN WHICH THE READING ABILITY OF THE YOUNGER GENERATION
APPEARS TO HAVE FALLEN BELOW THE READING ABILITY OF THE OLDER GENERATION***

AHOADA EAST LGA:

Younger Men's Reading Ability Appears to Have Fallen Below Older Men's Reading Ability in:

Odiabidi Community
Ihuaje Community
Udebu Community

Younger Women's Reading Ability Appears to Have Fallen Below Older Women's Reading Ability in:

Ikata Community
Ihuaje Community

OBIO-AKPOR LGA:

Younger Men's Reading Ability Appears to Have Fallen Below Older Men's Reading Ability in:

Elikpokwuodu Community
Choba Community

1. Focus Group Question: How many of you [in this room] can read a book out loud to another person?

STATE	LGA	COMMUNITY	OLDER MEN	YOUNGER MEN	YOUNGER WOMEN	OLDER WOMEN
Rivers	Ahoada East	Ihuowo	38%	43%	21%	12%
		Ikata	50%	100%	7%	8%
		Okporowo	21%	65%	93%	5%
		Odiabidi	48%	43%	50%	3%
		Ula-Ehuda	50%	100%	100%	14%
		Ihuaje	70%	64%	0%	0%
		Udebu	25%	17%	14%	8%
		Ogbo	45%	100%	48%	5%
		Edeoha	44%	58%	36%	7%
				Average Percentage	45%	70%
Rivers	Obio-Akpor	Elikpokwuodu	60%	36%	100%	30%
		Rumuodomaya	93%	100%	100%	100%
		Orokwuruola-Nu-Orofu	69%	87%	100%	71%
		Choba	56%	55%	100%	7%

STATE	LGA	COMMUNITY	OLDER MEN	YOUNGER MEN	YOUNGER WOMEN	OLDER WOMEN
		Woji	100%	100%	no YW FG	100%
		Eliozu	60%	69%	80%	no OW FG
		Average Percentage	75%	70%	96%	53%

2. Focus Group Question and School Administrator/Teacher Interview: Does your community have a primary school? If yes, how many students (boys/girls) and how many teachers?

STATE	LGA	COMMUNITY	PRIMARY SCHOOL?	# OF STUDENTS	# OF BOYS	# OF GIRLS	# OF TEACHERS	STUDENT/TEACHER RATIO
Rivers	Ahoada East	Ihuowo	yes	250	150	100	14	18 to 1
		Ikata	yes	700	400	300	7	100 to 1
		Okporowo	yes	190	120	70	5	38 to 1
		Odiabidi	yes	355	153	202	9	39 to 1
		Ula-Ehuda	yes	190	120	70	12	16 to 1
		Ihuaje	yes	219	109	110	10	22 to 1
		Udebu	yes	140	80	60	12	12 to 1
		Ogbo	yes	461	260	201	14	33 to 1
		Edeoha	yes	667	395	272	5	133 to 1
Rivers	Obio-Akpor	Elikpokwuodu	yes	1,064	200	864	42	25 to 1
		Rumuodomaya	yes	1,005	405	600	32	31 to 1
		Orokwuruola-Nu-Orofu	yes	850	350	500	35	24 to 1

STATE	LGA	COMMUNITY	PRIMARY SCHOOL?	# OF STUDENTS	# OF BOYS	# OF GIRLS	# OF TEACHERS	STUDENT/TEACHER RATIO
		Choba	yes	625	350	275	10	63 to 1
		Woji	no	n/a	n/a	n/a	n/a	n/a
		Eliozu	yes	1,450	650	800	8	181 to 1

- 3. Focus Group Questions:**
- Do all the children in Primary School have a desk and chair?**
 - Are the textbooks in Primary School free to the students or do parents pay?**
 - Does the Primary School have a functioning library? Toilets for children?**
 - What is the monthly salary of Primary School teachers? Is it paid regularly?**

STATE	LGA	COMMUNITY	DESK AND CHAIRS?	DO PARENTS PAY FOR PS TEXT-BOOKS?	FUNCTION-ING LIBRARY?	TOILETS FOR PUPILS?	MONTHLY SALARY OF PS TEACHERS (in Naira)	ARE TEACHERS PAID REGULARLY ?
Rivers	Ahoada East	Ihuowo	no	yes	no	no	17,000	yes
		Ikata	no	yes	no	no	20,000	yes
		Okporowo	no	yes	no	no	7,500	yes
		Odiabidi	no	yes	no	no	8,000	yes
		Ula-Ehuda	yes	yes	no	yes	18,000	yes
		Ihuaje	no	yes	no	no	92,000	yes
		Udebu	no	yes	no	no	don't know	yes
		Ogbo	no	yes	no	no	15,000	yes
		Edeoha	no	no	no	no	15,000	yes
Rivers	Obio-Akpor	Elikpokwuodu	no	yes	no	no	14,000	yes

STATE	LGA	COMMUNITY	DESK AND CHAIRS?	DO PARENTS PAY FOR PS TEXT-BOOKS?	FUNCTION-ING LIBRARY?	TOILETS FOR PUPILS?	MONTHLY SALARY OF PS TEACHERS (in Naira)	ARE TEACHERS PAID REGULARLY ?
		Rumuodomaya	no	yes	no	no	32,000	yes
		Orokwuruola-Nu-Orofu	no	yes	no	yes	no idea	yes
		Choba	no	yes	no	no	14,000	yes
		Woji	no	yes	no	no	n/a	n/a
		Eliozu	yes	yes	no	yes	37,000	yes

5. Focus Group Question (Younger Women Focus Group): Do the teachers “dey try” or do well teaching? Do teachers teach regularly (Monday thru Friday, morning and afternoon)? Are there teachers quarters available for the teachers?

STATE	LGA	COMMUNITY	Teachers Try?	Teach Regularly?	Teachers Quarters Available?
Rivers	Ahoada East	Ihuowo	yes	yes	no
		Ikata	no	yes	no
		Okporowo	yes	yes	no
		Odiabidi	yes	yes	no
		Ula-Ehuda	yes	yes	no
		Ihuaje	yes	yes	no
		Udebu	yes	yes	no
		Ogbo	yes	yes	no
		Edeoha	yes	yes	no
Rivers	Obio-Akpor	Elikpokwuodu	no	yes	no
		Rumuodomaya	yes	yes	no
		Orokwuruola-Nu-Orofu	no	yes	no

STATE	LGA	COMMUNITY	Teachers Try?	Teach Regularly?	Teachers Quarters Available?
		Choba	yes	yes	no
		Woji	no	no	no
		Eliozu	yes	yes	no

